

DESIGNER DOORS

by SCHWEISS 11/05/2024

"ONE-PIECE" HYDRAULIC DOORS & LIFT-STRAP BIFOLD DOORS



- DESIGNER DOORS
- DECORATIVE DOORS
- GLASS DOORS
- STOREFRONTS
- AND MORE...

You Think It...
We Build It!

 **SCHWEISS**
DOORS

LASTING IMPRESSIONS...

Schweiss 'Designer Doors' corner the market with incomparable engineering and quality!



Ask any Schweiss Designer Door owner: Chances are very good that they'll say purchasing a Schweiss bifold or hydraulic door of any style was one of the best investments and smartest decisions they ever made. Schweiss door aesthetics are one factor, but what really matters is quality of construction and door longevity with reliable efficient performance for years to come.

Schweiss glass designer doors will enhance the interiors and exteriors of homes and offices; blending in so well that sometimes you have to look twice to see it's actually a door, room divider or moving glass wall.

There are many choices of decorative door coverings that can be used to blend in with adjacent walls. You may also want to choose from glass, metal siding, decorative wood, translucent panels, decorative and custom windows and trim, vinyl siding, stucco, rock face material and more to make your door one of a kind with its own unique style.

Whether it be a hydraulic or bifold style door our outstanding long line of Designer Doors are used on homes, restaurants, stadiums, museums, RV garages and more.

SCHWEISS OPENS NEW DOORS TO THE WORLD EVERY DAY
Our Motto Has Long Been . . . "You Think It – We Build It !"

Schweiss Designer Doors Are a Leader in the Designer Door World:

On the Schweiss website, go to "Must See Photos," "Designer I or Designer II" buttons and you'll be amazed at the many and varied applications Schweiss Designer Doors have been used for. There has been an overwhelming demand for Designer Doors. Requests have been coming in daily and leaving the factory on a regular basis. Schweiss opens new doors every day. Schweiss doors stand out in a league of their own.

Flexibility:

Schweiss has long been known for its design flexibility. Our design team works with architects, contractors, dealers and building suppliers to make sure the door you order will precisely fit your clear opening. We'll answer your questions and provide AutoCAD shop drawings, door weights, loadings, hinge locations, specs and fine details. Customer satisfaction is our number one goal. We strive to make everyone proud of their door project.

Custom Design:

Schweiss will help you work through your design questions. We welcome any challenge. Bring your ideas to us; together we will make it happen. Every Schweiss door is custom-made whether it's a bifold or hydraulic door; there are no restrictions or size limitations. If you are retrofitting an existing building or opening and need a free-standing header to support your building or door, Schweiss can design a support header that works for you.

Quiet/Smooth Operation:

You'll be amazed at how quiet and smoothly our patented liftstrap or one-piece hydraulic doors operate and how well they seal and lock-in tight to your building in all types of weather. Built-in safety features make our doors the best. We can provide photo eye sensors, warning horns and lights, remote openers, walkdoors, keyless lock entry and backup systems in case of power outages.

Architects Use Schweiss:

Architects from coast-to-coast, Canada and overseas look to Schweiss Designer Doors for structural integrity that also provides strong security, ease and simplicity of operation with a nice clean look. Schweiss Doors come with a stellar reputation and the staff at Schweiss is always very helpful. As one architect said, "If a world-class architect specifies Schweiss, it must be for a good reason!"

**LET SCHWEISS SPECIALISTS HELP MAKE YOUR NEXT PROJECT
BE THE BEST THAT IT CAN BE !**



PAGE INDEX

PROJECTS	PAGE	PROJECTS	PAGE	PROJECTS	PAGE
• 120' Hydraulic Door	1	• JT Stranger Hangar	97	• Red Bull Headquarters	73
• Ainslie Restaurant	24	• Kenyon College	100	• Rental Hangar Doors	29
• Acheson Hangar	19	• Kicking Horse Residence	77	• RiverEdge Park	74
• Armed Forces School	21	• Kingston Garage	63	• Rocket Hangars	20
• Barrel & Bushel	81	• Korthuis RV Garage	80	• Rolls-Royce Garage	6
• Basement Door	103	• Lake Hood Seaplane Base	31	• Sacramento Kings Stadium	78
• Belgium Airforce Hangar	89	• Lake Tahoe Boathouse	85	• Sam's Tavern	44
• Beloit College Powerhouse	2	• Lanz Hangar	16	• Santa Monica Glass Door	94
• Bi-Rite Cafe Kiosk	47	• Louisiana Sports Hall of Fame	87	• SC Institute of Architecture	91
• Blarney Stone Pub	86	• Luxury Hillside Home	65	• SF Giants Stadium	99
• Bobby Hotel Bus	49	• Macanda Mexican Restaurant	5	• SilverWing Airpark	82
• BPA Hangar	36	• Mercedes-Benz Dealership	15	• Solis Seattle Apartments	32
• BPA Maintenance Bldg.	50	• Metal Shutter House	93	• Soma Towers	69
• Cafe Intermezzo	55	• Metro Community College	17	• Stanford University	101
• California Bike Transit	79	• ME Yacht Restoration	48	• Sterling Aviation H.S.	45
• Chappel Hill Garage	64	• MN State Fair	51	• Struther's Garage Doors	57
• Cubex Limited	95	• Moore Car Barn	7	• Superba Restaurant	58
• Custom Containers	90	• Music Factory	62	• Sway Thai Restaurant	71
• Custom Matched Siding	105	• National Tennis Assoc.	52	• Texas Garage Door	59
• Cycle City	102	• NC Carriage House	72	• Texas Hangar Home	46
• Doc B's Kitchen	76	• New Caney College/H.S.	37	• TGI Fridays	104
• Dolphin Place	3	• Newmarket Operation Center	83	• The Home of Art	4
• Econo Lumber	8	• Nine Fine Irishmen	98	• Tin Can Project	54
• Emergency Ops Center	28	• North Carolina Art Studio	38	• Truckee Garage Door	106
• Federales	66	• NY Hydraulic Window	53	• Under Armour Storefront	70
• Fermilab	13	• NY Pool House	41	• U of IL Memorial Stadium	33
• Fort Carson Military Doors	92	• NY Storefront	68	• University of Mass.	60
• Genentech Bifold	30	• Old Navy Store	96	• U of AZ Health Science Bldg.	11
• Guide Dogs of America	67	• Opus One Winery	84	• VA Helicopter Hangar	61
• Guthrie Theater	88	• Oregon Hangar	39	• Venice, CA Rental Home	18
• Hamilton College Boathouse	9	• Pen Factory	40	• Vihlen Saleplane Hangar	26
• House of Air	75	• Pike Motorworks Apts.	41	• Vikings Training Facility	23
• Huffman Hangar	22	• Portland Yacht Services	35	• Warren Harding H.S.	56
• Huisman Farms	25	• Prescott Warbird Factory	34	• Yankee Stadium	43
• ICA Water Shed	14	• Prime Metal Buildings	12		
• Ireland Helicopter Hangar	27	• Raven LA Show Containers	42		



120' Hydraulic Door

United Therapeutics Hangar, Concord, NH

Silver Maple Construction Crafts a Historic Net-Zero Hangar for United Therapeutics, Featuring 120 Ft. Hydraulic Door by Schweiss Doors. Two large Schweiss hydraulic doors, installed by Irishspan Industries, Inc., are essential to the hangar's design. "The big hangar door, 30 ft. tall by 120 ft. wide, for the Gulf Streams, the biggest door Schweiss has ever made to date, actually cantilevers out," said Evan Herron, Project Manager at Silver Maple Construction. The larger of the two doors weighs 60,000 lbs, and the smaller door weighs 20,000 lbs.

Covering an expansive 36,000-square-foot area, the construction of every inch of this hangar, from the prefabricated exterior walls to the corrugated metal roof decking, has been designed and implemented to a remarkable level of detail. These features come together to set a new standard of excellence and quality in the construction industry.





Beloit College Powerhouse

Beloit College Powerhouse, Beloit, WI

Beloit College teamed up with Studio Gang to turn an old coal power plant into a buzzing hot spot for students to get together, stay healthy, and have fun. The Powerhouse is right by the Rock River and close to campus. The project preserved some historic elements of the Blackhawk Generating Station while adding new eco-friendly aspects. A large Schweiss bifold lift strap door opens the indoor/outdoor recreation gym, allowing for ample fresh air and sealing lock-tight when closed. The Schweiss hangar-style bifold door is one of many sustainable energy features on the campus.

The Powerhouse is a huge space with a 10,000-square-foot place to work out and a 17,000-square-foot gym. There's also a track with three lanes, a pool with eight lanes for races, and lots of spaces to hang out, talk, work together, or study; plus, there's a coffee shop, places for students to relax, rooms for clubs, a big meeting area, and even a hall for lectures or shows.





Dolphin Place

Dolphin Place Hydraulic Door, Jolla, CA

From 1948 to Today, Dolphin Place Mixes Classic and New Styles. Welcome to the one-of-a-kind Dolphin Place, a house designed by Architects Magnus and hidden by two big Hollywood Juniper trees in La Jolla, California. This house was built in 1948 and was once owned by the client's grandmother. It holds many happy childhood memories.

The home has huge glass doors open up to a private courtyard. The grandchildren turned the garage into "the cube," a cool hang-out spot for lounging. The large Schweiss hydraulic door opens for indoor/outdoor fun and is filled with light, making it feel bigger and more welcoming.





The Home of Art

Kramlich Collection, Napa Valley, CA

Art Meets Architecture at the Kramlich Collection in Napa Valley, California. It has become a choice destination for those who appreciate art and architecture. It's even more impressive in person, with spaces allowing flexibility in hosting art installations or performances. The Kramlich Collection is known for its modern architecture. Designed by Jacques Herzog and Pierre de Meuron, the Swiss architects' vision was to create a unified interior and exterior experience by creating transitions between them through materials, textures, and lighting that flow smoothly between the different spaces.

The two hydraulic doors are clad with translucent panels inside and light-emitting expanded aluminum on the outside. The large hydraulic doors close with a gentle airtight locking sound, creating a barrier between the outside world and the private inner sanctum, lending an air of privacy and intrigue to the experience for all who enter.





Macanda Mexican Restaurant

Macanda Mexican Restaurant, Wayzata, MN

Macanda Mexican Restaurant, nestled along the picturesque shores of Lake Minnetonka, ingeniously incorporated two 12'x4' hydraulic doors to partition the main dining area from their vibrant "HiFi Room" music bar and social space. These sleek, modern doors not only add a touch of contemporary elegance but also enhance the flexibility of the restaurant's layout, effortlessly transforming the ambiance from a cozy dining atmosphere to a lively social gathering spot. With the doors in place, patrons can enjoy the serene lake views and dining experience in one moment, then seamlessly transition to the pulsating rhythms and energetic atmosphere of the HiFi Room in the next, creating a dynamic and multifaceted dining destination unlike any other along the lake's shore.





Rolls-Royce Garage

Rolls-Royce Glass Hydraulic Garage Door, Boston, MA

After seeing a bifold door on a commercial building, an Internet search led Eddie and his wife to Schweiss Doors in Minnesota. Learning more about the options, he decided a one-piece hydraulic door would be the best fit for the house and his car collection. Their beautiful approximate 6,000 sq. ft. home with its 1,100 sq. ft. garage capable of holding up to six vehicles was built by Kistler & Knapp Builders and has since been featured in Boston Home magazine. LDa Architects and Interiors in Boston assured Eddie the kind of hydraulic door that he has now would give the garage a much cleaner look as opposed to a roll-up or strap style door.

The Schweiss 29 ft. x 9 ft. custom-built hydraulic door was engineered to meet glass deflection for its 12 top-to-bottom windows that allow more than an adequate amount of natural light to enter the garage. "The Schweiss door is by far the coolest part of the house," exclaimed Eddie. "The way it operates, I've had neighbors stop walking to watch it. Every landscaper in town is constantly asking me questions and commenting on it."





Moore Car Barn

Moore Car Barn, Tallahassee, FL

In Florida, where the climate is famously hot, muggy, and plagued by bugs, Robert Moore faced a unique challenge: finding a door that could effectively keep out both the relentless heat and pesky insects. Standing tall at 10 feet high and spanning an impressive 30 feet wide, the hydraulic door installed on remarkable 50' x 55' car barn has proven to be the perfect solution.

The robust door design not only seals off the interior from the sweltering heat of the Florida sun but also creates a formidable barrier against unwanted bugs, ensuring a comfortable and insect-free environment inside. This innovative door not only meets the practical needs of the space but also enhances its functionality, providing peace of mind and optimal conditions for the valuable cars inside which include a 911 GT3RS Porsche, 911 turbo Porsche, a 1967 and a 1968 Land cruiser.





Econo Lumber

Econo Lumber Hangar, Prince Albert, Saskatchewan, Canada

Curtis Lemieux of Prince Albert, Canada is at the helm of his successful family-owned and operated business of Econo Lumber and Econo Timber Mart in Prince Albert, Saskatchewan, Canada. Econo Lumber/Econo Timber Mart are one-stop locations for a wide array of building and home improvement project needs. They carry a wide variety of quality and economical building supplies, power tools and home renovation products. Since 1971, their business has undergone three major expansions growing from the original 1,130 sq.ft. to today's 40,000 sq.ft. on 10 acres.

Lemieux, recently completely renovated his 70 ft. x 70 ft. hangar that is located at Prince Albert Airport Glass Field. The renovation entailed ordering two Schweiss hydraulic hangar doors. The largest of these two hydraulic doors is a 54 ft. x 16.9 ft. (1,646 cm x 515 cm) It has four windows to take advantage of available light. The smaller adjacent 13.3' x 8.11' (405 cm x 247 cm) hydraulic door is used for a storage area and is where both hydraulic door pumps are also located out of view. Both doors are equipped with remote openers.





Hamilton College Boathouse

Hamilton College Boathouse, Rome, NY

Row, row, row your boat, all the way to Hamilton College's new Boathouse located on the Erie Canal in Rome's Bellamy Harbor Park. The one-story, rectangular wood-framed structure with a footprint of approximately 3600 square feet was equipped with a 28' x 11' Schweiss Bifold Door, the nationally recognized rowing team now has a place they can truly call home.

The superstructure is supported by glu-laminated wood frames with a wood roof deck and wood-framed shear walls. The new storage facility includes an area for boat and oar storage, office, bathrooms, tool storage, meeting room, and an operations area.





NY Pool House

Detached Pool House, Accord, NY

It doesn't really matter at all if the sun is shining or not, a 2,000 sq. ft. detached year-round use pool house, designed by Gauthier Architects of Brooklyn and built at upstate Accord, New York, makes any day inviting for a quick dip, hours spent with family or a pool party.

Taking up nearly the entire sidewall of the pool house is a Schweiss bifold double-glazed glass designer door that extends 34.4 ft. across and 13 ft. tall. It has an automatic latch system, electric photo eye sensors and black liftstraps. The glazed designer door, trimmed with neoprene and mahogany, gives a nice view of the wooded area outside and around the pool house.

"The homeowners have been using the door for months and absolutely love it. They like the 'muscle of the machine' — the motors and the steel. It's kind of cool, sort of an industrial pool house look. The pool house is a year-round play, swim, exercise, and recreational sanctuary," said Principal Architect, Douglas Gauthier.





U of AZ Health Science Bldg.

University of Arizona Health & Science Innovation Building, Tucson, AZ

The Health & Sciences Innovation Building, designed by CO Architects, contains 9 stories with a variety of purposes for each floor. The ground floor, known as the forum, features a stage area with tiered seating. On the front side of the forum stand three glass hydraulic Schweiss Doors which make up one full wall. The large 26' wide by 17' tall hydraulic window/walls can be opened to the courtyard beyond, creating an expanded indoor/outdoor space which provides an atmosphere of inclusiveness and encourages engagement, interaction and fosters connections.

Architectural Design: CO Architects

Photography: Timmerman Photography Inc.





Prime Metal Buildings

Prime Metal Buildings Hydraulic Hangar Door, Dublin, TX

Prime Metal Buildings & Components' new hangar exemplifies their design ingenuity and commitment to superior-quality craftsmanship. The corporate hangar features a substantial Schweiss hydraulic door, driven by an advanced hydraulic pump and cylinder system. This robust setup ensures the reliable lifting and smooth opening of the massive one-piece door, demonstrating Prime Metal Buildings & Components' dedication to functionality and efficiency in their structures.





Fermilab

Fermilab National Particle Physics Lab, IL

Fermi National Accelerator Laboratory (Fermilab), located in Batavia, Illinois, 40 miles west of Chicago, is a U.S. Department of Energy national laboratory specializing in high-energy particle physics.

As part of the Short Baseline Neutrino (SBN) program at Fermilab a 20.10' x 23.9' bifold liftstrap door was installed in the new 4,500 sq. ft. SBN Near Detector Building.

The door features gray liftstraps, electric photo eye sensors, warning lights and horns, a top-drive motor, automatic latching system and an emergency back-up system. The door is clad with glass on the bottom quarter and high performance light transmitting Kalwall® panels covering the top three-quarters of the door, both to identically match the adjacent east wall of the building.





ICA Water Shed

ICA Water Shed, Boston, MA

The Institute of Contemporary Art (ICA) in Boston has added a new expansion to its artistic programming across Boston Harbor to the East Boston Shipyard and Marina. It presents artwork and public programs in a newly renovated 15,000 square-foot former copper pipe and sheet metal factory. Convenient for this purpose were two very unique Schweiss bifold designer doors positioned at opposite ends of the building. The doors are each 15.9' wide by 19' tall. The bifold doors in this project are unique in that the top half of the doors is emblazoned with the ICA Watershed logo which overlaps the bottom half and still remains visible with the door partially opened. Translucent polycarbonate cladding also gives the door a glow allowing colors and light from inside the Water Shed to show through.

"The doors were big with very robust frames, that's why we chose Schweiss." said Nick Winton of the architectural firm of Anmahian Winton Architects. "We wanted to use a lightweight cladding material that was inexpensive and handled daylight well."





Mercedes-Benz Dealership

Mercedes-Benz Dealership, MO

When you think of top quality car lines, Mercedes-Benz is one of the first to come to mind. When you think of top quality in bifold and hydraulic doors, it's a big ditto for Schweiss. When Mercedes-Benz of St. Louis built a new building and parking garage on Hampton Avenue it was a Schweiss bifold glass designer door that was incorporated at the new dealership. The Schweiss bifold liftstrap door measures 23.11' x 9.4' and is equipped with electric photo eye sensors, manual latch system, a door base safety edge, black liftstraps and a top drive motor.

The Schweiss bifold system matches an aluminum frame system like the rest of the building, only with a steel frame. It really gave them the same, consistent look and still is operable for the owner to get their cars in and out.





Lanz Hangar

Lanz Hangar, Eugene, OR

The main reason Lanz Cabinets went with a Schweiss hydraulic door was because they needed all the headroom, they could get due to height restrictions on their side of the airfield because the control tower needed unobstructed line of sight. The door was the solution enabling them to build the hangar where it is. With a bifold door they would have had to build the hangar taller, resulting in higher construction costs.





Metro Community College

Metropolitan Community College, Omaha, NE

As part of its recent Master Plan Update, Metropolitan Community College (MCC) in Omaha, Nebraska strategically created three buildings as centers of specialization. It's 65,000 sq. ft. Central Main Building included the incorporation of two Schweiss bifold doors. The larger 18.4' wide x 26.5' tall design-er door was clad in glass. The smaller 15.6' wide x 18.3' tall door was clad with fiber cement panels. Both doors were powder coated and have electric photo eye sensors, door base safety edges, warning lights and horns, gray liftstraps and emergency back-up systems in case of a power outage. The larger door is used to bring in equipment and the smaller door gives access to classrooms and opens to a transitional room housing utility components.

(Photo by Nick Merrick © Hall + Merrick)





Venice, CA Rental Home

Rental House, Venice, CA

The hydraulic glass designer door on this rental home allows fresh air into the living room. The modernistic rental home, located just blocks away from the Venice Beach Boardwalk and Marin Del Rey, CA, is available for \$11,000/month. This 2-bedroom split level home offers 1,530 sq. ft. with a glass-clad 14' x 11' Schweiss Window Wall that opens one end of the home to the beautiful California sunshine.

Architect and owner, Matthew Royce, says the door is well built and brings natural light into the home. When he goes to show the home to people the door makes for a great rental point. People love it because no one has ever seen anything like it on a house.





Acheson Hangar

Acheson Hangar, Alberta, Canada

If you think the exterior of Gary Acheson's Alberta, Canada hangar looks slick and clean, you ought to see the inside — it sparkles. His hangar office and pilots lounge have comfortable seating and is something else to behold; it has a Cirrus II flight simulator and other electronic equipment that most pilots would drool over.

Gary Acheson of Alberta, Canada has a beautiful new 6,000 sq. ft. hangar with a 55 ft. x 19.6 custom-made Schweiss bifold liftstrap door with auto latches, warning lights, horns and emergency backup system. The door also came with liner flashing to make installing the inside liner a breeze.





Rocket Hangar

Rocket Hangars, Cape Canaveral, FL

Schweiss has built large doors installed at various locations going back to 2008 for Cape Canaveral, Waco, Texas and Vandenberg AFB in California, and they keep coming back for more.

Their latest orders were installed on a new steel hangar at Cape Canaveral. The largest of the two is a Bifold Liftstrap door 90 ft. wide x 61 ft. tall. The second door is 40 ft. wide x 69 ft. tall. Each door is equipped with automatic latches and windrated to 150 mph. Bottom-drive 480 volt, 3 phase motors and patented Schweiss liftstraps do the lifting of these doors that exceed 53,000 lbs. The Schweiss Bifold Liftstrap/Autolatch door opens wide to enable rockets at Cape Canaveral to be delivered to the launch pad.





Armed Forces School

Armed Forces School, Borden, Ontario, CA

Supplying doors for military bases is nothing new for Schweiss Doors, we have been doing it for years. Although Canadian Forces Base, Borden didn't have a need for specialty blast-proof doors like other military establishments, a recent building expansion project for its Ontario training school called for the use of Schweiss hydraulic and bifold liftstrap doors. The seven-door order of Schweiss hydraulic and bifold doors was for a new 16,000 sq. ft. Mechanical Engineering and Training Building at the base, which has a tank display school for training mechanical and electrical engineers.

They chose four identical 18' 10" x 14' 5" bifold liftstrap doors and three hydraulic doors; one of which was 18' 3" wide by 8' tall and two that were 17' 11" wide by 8' 3" tall. The bifold doors are clad with glass and equipped with automatic latches, emergency back-up hand crank, remote openers, weatherproof electrical and door base safety edges.





Huffman Hangar

Huffman Hangar, MI

Some pilots have hangar mancaves, and then there are pilots who really have hangar mancaves. Gary Huffman of southern Michigan is an avid outdoorsman and pilot/instructor with many hours in the air. His hangar has a 43.7' x 11.1' custom-made Schweiss hydraulic door. The white pine clad mancave door and walls are lined with an amazing assortment of hunting trophies and memorabilia. The hydraulic pump is hidden away in a white pine box he made to conceal it. He spends a lot of time in his hangar that houses his 1978 Cessna 206 Stationair and his pristine out-of-the-factory condition 1948 Stinson 108 Voyager.





Vikings Training Facility

Vikings Training Facility, Eagan, MN

Vikings Practice Facility Goes With Schweiss Doors. The new Twin Cities Orthopedics Performance Center and Vikings football practice facility has two 20' x 14' Schweiss bifold liftstrap doors in the weight room. These doors lead out to four outdoor practice fields. The weight room spans over 6,100 sq. ft. With scores of racks, weights and other conditioning machines. The campus sits on about 35 acres just south of Interstate 494 in Eagan. (Photos by Bergerson Photography)





Ainslie Restaurant

Ainslie Restaurant, Brooklyn, NY

What was once the Excelsior Cable Factory warehouse years ago has been totally converted to a place of fun and leisure as an Italian restaurant wine bar and beer garden with a sedate backyard for customer comfort and added seating. It's one of Brooklyn New York's newest restaurants specializing in Italian food and has a Schweiss 31' x 14; bifold liftstrap designer door clad in glass that opens to additional outdoor backyard patio seating with trees.





Huisman Farms

Huisman Family Farm, Atwater, MN

Tim and Jim Huisman of Atwater, MN have three Schweiss bifold liftstrap farm doors. The largest is 50' x 18' and a 45' x 18' and 36' x 17'. The interior of the big door is customized with John Deere green paint, black liftstraps and has auto latches and remote opener.

The Huisman's, who now work their 3,000-plus acre corn and soybean farm, first contacted Schweiss Doors nearly 20 years ago to order their first Schweiss 36' x 17' bifold liftstrap door. What they like most about the doors is the ease of operation, good installation, the width and they love the straps. They also like the autolatches because the doors are always latched; that way nobody can forget to latch the door.





Vihlen Sailplane Hangar

Vihlen Sailplane Hangar, Locust Grove, GA

Steve Vihlen of Locust Grove, Georgia makes his living as a Captain on a 767 FedEx cargo plane that takes him on national and international routes. He's no stranger to the sky; having earned his pilot's license at an early age that later led him to join the Air Force and become a F-16 combat pilot for eight years.

He's seen a lot of hangars and hangar doors over the years and now that his main passion is flying sailplanes, he decided on a Schweiss 60' x 12.5' bifold liftstrap door to accommodate the 59' wingspan of his German-made Alexander Schleicher ASG-29 modern single-place racing glider and 1964 Schweizer 126-B glider. He also flies a 7AC Aeronca Champ and uses his vintage 1952 Cessna L-19/O-1 to tow the gliders

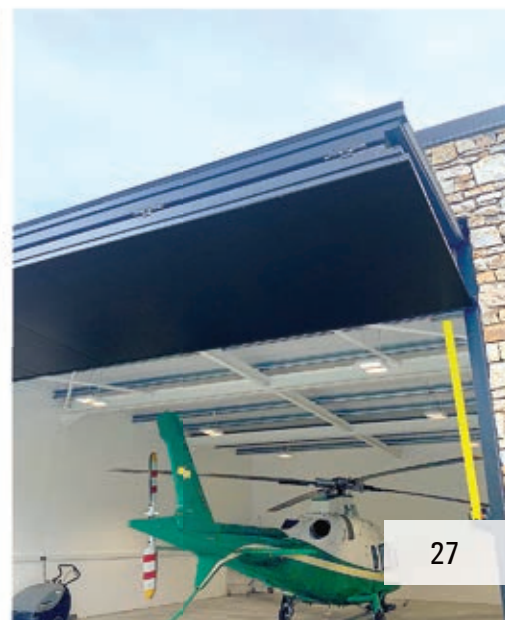




Ireland Helicopter Hangar

Helicopter Hangar, Belfast Port, Ireland

Schweiss Doors is renowned worldwide for its hydraulic and bifold liftstrap doors. This attractive rock-faced helicopter hangar owned by Brendan McDermott of Tyron Fabrication in Belfast Port, Ireland has a 30' wide x 12' bifold liftstrap door and features the new Schweiss "Strap Latch" system that ensures the door will lock secure and weathertight each and every time.





Emergency Ops Center

Emergency Operation Center, Martinez, CA

When Contra Costa County Public Safety Building & Emergency Operations Center went into the design phase of building its new Emergency Ops Center (EOC) building in Martinez, California they looked to Schweiss Doors for one of its hydraulic designer doors. Their decorative-clad custom-made hydraulic glass designer door is 23.1 ft. wide x 13.9 ft. tall. It is equipped with electric photo eye sensors, a door-base safety edge and a hydraulic back up system in case of a power outage. The building was designed to achieved LEED Gold certification.

The new essential service facility houses the office of the County Sheriff and Command Staff. A state-of-the-art Emergency Situation Room within the Emergency Operations Center is equipped with the highest level of communication technology. Within the building is a public training and lecture hall with amenities to support media briefings in times of emergency operations and community events.





Rental Hangar Doors

Rental Hangars, Wiener Neustadt, Austria

When it came time find a door manufacturer who could provide five bifold doors for a private rental hangar project at the Wiener Neustadt Airport near Vienna, Austria Robert Kudrna, CEO at KAT.AT building contracting company that specializes in greenhouse construction, searched the Internet for hangar doors and came up with Schweiss Doors. He went a step or two further and compared Schweiss Doors company prices and quality with other European door companies, and Schweiss came out on top. In fact, he was so impressed with Schweiss Doors that he decided to fly to Minnesota to take a tour of the Schweiss Doors factory. The largest hangar has three doors; a 63.5 ft. x 23.8 ft. doors.

The other two smaller hangars have 43.5 ft. x 23.8ft. bifold liftstrap doors. Kudrna said there was one small blacksmith company in Austria that produces doors that look like Schweiss doors, but it would have taken 12 months delivery time and all the other door company prices were a lot higher than Schweiss





Genentech Bifold

Genentech Pharmaceuticals, San Francisco, CA

Genentech's major pharmaceutical company campus in South San Francisco, California has multiple buildings that house an advanced research center and various business functions where they manufacture and market pharmaceutical products. Its newest, Building 40, incorporated the use of three Schweiss Bifold Designer Doors for its indoor and outdoor dining areas. The glass lifstrap doors varied in widths of 24, 21 and 19 ft. with overall heights of 10 ft. 10 inches.

Each door is equipped with top drive motors, automatic latching systems, remote openers, electric photo eye sensors, door base safety edges, warning lights and horn and an emergency backup system that could be used in case of a power outage. The doors are wired into smoke, fire and security systems. If there is a security breach in any of Genentech's building's the doors will automatically shut. The doors are in the cafe area so they can open them up and have outside dining.





Lake Hood Seaplane Base

Lake Hood Seaplane Base Hangar, Anchorage, AK

A major addition was added to the Jim St. George hangar at the Lake Hood Seaplane Base in Anchorage. Lake Hood is a state-owned seaplane/floatplane base located three nautical miles southwest of downtown Anchorage. Operating continuously and open to the public, Lake Hood is the world's busiest seaplane base, handling an average of 190 flights per day. It is located next to Ted Stevens Anchorage International Airport. The base has an operating control tower and during the winter months the frozen lake surface is maintained for ski-equipped airplanes.

The new hangar, that now abuts to the old one, was revamped with an addition of two larger hangar bays. The bays have access to a 5-ton or a 1-ton overhead crane that can be leased out for use to other pilots. It was because of the cranes that St. George





Solis Seattle Apartments

Solis Apartments, Seattle, WA

Architects, visionaries and artisans converged to create a one-of-a-kind building targeting Passive House Certification on the Solis Luxury Apartments. In Seattle. All this is sculpting a new era in Seattle that aims to achieve better air quality, and up to a 70 percent energy reduction for heating and cooling needs.

Schweiss Doors played a part in this with its inclusion of two 12'10" x 15'7" custom-made decorator-clad designer bifold doors. The bifold liftstrap doors have top-drive motors, an automatic latch system and door base safety edge construction. This is the largest Passive House-Certified multi-family building in Washington. All the air is pulled in and filtered from the roof at 75-plus feet, where you get better air. The air inside unit is then replaced with fresh filtered air 12 times per day.



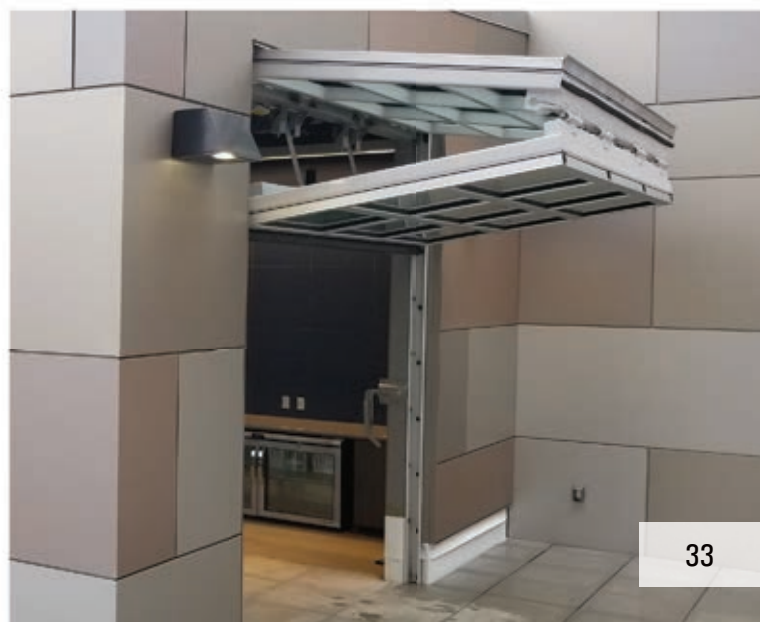


U of IL Memorial Stadium

U of Illinois Memorial Stadium, Urbana-Champaign, IL

When the University of Illinois decided to continue with its ongoing renovation projects to include a new Memorial Stadium Performance Center, they looked to Schweiss Doors to supply bifold glass designer doors for the upper floor. The largest of the three bifold doors is 21.6' x 10.8' and the other two are 9.7' x 11'. The glass-clad designer doors are equipped with electric photo eye sensors, a door base safety edge, gray liftstraps, manual latches and an emergency backup system in case of a power outage. The doorframes were also powder coated.

"It's a little like Christmas Day," said Lovie Smith, who was head coach football coach during the renovation. The doors were installed on three sides of the 45' x 30' rooftop entertainment and kitchen section of the building. Opening the doors makes it accessible from all sides and the glass doors give a full view outside. The stadium was first dedicated to the men of the University of Illinois that gave their lives serving in World War I.





Prescott Warbird Factory

Prescott Warbird Factory, Latham, NY

The Hangar at 743, home of the Warbird Factory in Latham, New York is passionate about preserving and maintaining the heritage of history of WWII aircraft and honoring our heroes and veterans. The Hangar at 743 serves as a museum, showing off its collection of WWII aircraft and memorabilia.

The hangar also transforms into a reception hall large enough to host up to 300 people for a sit-down dinner, military ceremonies or weddings. This one-of-a-kind venue offers guests a close-up-look at iconic warbirds like the B-25 Bomber, F4U Corsair, T-6 Texan trainers, Japanese Zero and more. This renovated hangar, previously used as a New York State Police hangar, now opens wide with a Schweiss 60' x 20' hydraulic door.





Portland Yacht Services

Portland Marina

The addition of a large 80 ft. x 150 ft. marina service building with its large 62 ft. x 60 ft. tall Schweiss bifold liftstrap door and 330 metric-ton self-propelled Marine Travelift is part of a 38-year business plan. It enables Portland Yacht Services to pull many larger ferry boats and yachts out of the water that require repair, painting or maintenance.

The expanded facility in Portland now means boat owners won't have to travel long distances away from home and will allow them to do the work on their boats in the off-season in a more controlled environment. The bifold door weighed in at 42,415 lbs and is the second tallest door Schweiss has ever manufactured during its 40-year history, only second in height to a SpaceX rocket hangar door at Cape Canaveral in Florida that is 90 ft. wide x 61 ft. tall.





BPA Hangar

BPA Hangar, Redmond, OR

Standing proudly atop the black tarmac of Redmond, Oregon Airport is the newest helicopter hanger for the Bonneville Power Administration (BPA). From their new operations hanger, power line inspections are flown by BPA surveillance teams at least three times per year, searching for frayed cables, broken insulators and any tower damage. The 5,500 square-foot hangar is home for two Bell 407 helicopters and the whisper-quiet, 40' x 20' Schweiss bifold door opens via heavy duty nylon lift straps, each rated at 29,000 lbs.

Senior project manager, Rob Kelleher said he first found out about Schweiss Doors while building a hangar right next to a Les Schwab tire dealership hangar that had a Schweiss door. He doesn't recall looking at any other door manufacturers before deciding on Schweiss. "We are very happy with the Schweiss door... It was interesting to see the liftstraps for the first time; they seemed very simple. It worked real well and I don't think we got any callbacks from BPA on it.... We've looked at a lot of Schweiss doors since then," said Kelleher.





New Caney College / H.S.

Infinity Early College High School, New Caney, TX

An approximate \$11 million 47,000-square-foot, facility will steer high school students onto the road of success. Bordering the north side of the Lone Star College-Kingwood campus in Porter, Infinity Early College High School (IECHS) in New Caney, Texas, is an innovative high school that allows students least likely to attend college an opportunity to earn a high school diploma and either an associate degree or at least 60 college credit hours toward a baccalaureate degree in the time it takes to graduate from high school.

Included in the building project are three Schweiss bifold designer doors with glass cladding. They range in size from 11.6' wide to 9.3' and all have clear opening heights of 7.75'. The liftstrap doors, powered by top-drive motors are equipped with electric photo eye sensors, door base safety edges and manual side latches. Purpose of these doors was to separate the main area of the school from the kitchen. The doors are located completely inside the building.





North Carolina Art Studio

North Carolina Art Studio, NC

Every architect commissioned to design a mountain location retreat, in this case, GLUCK +, based out of New York, faces a challenge of how to come to terms with the elevation, rock formations, climate, slope, trees and especially the vista.

This also held true for door installers who were faced with the task of providing two Schweiss bifold straplift glass designer doors at the residence of an art studio in the Blue Ridge Mountains of North Carolina. Forming a glass corner in an open two-story space are two 23' x 15'2" straplift bifold glass-clad doors that have electric photo eye sensors, door base safety edges and black liftstraps and quiet, fast opening top-drive motors. The up/down door control is located 60' away from the doors.



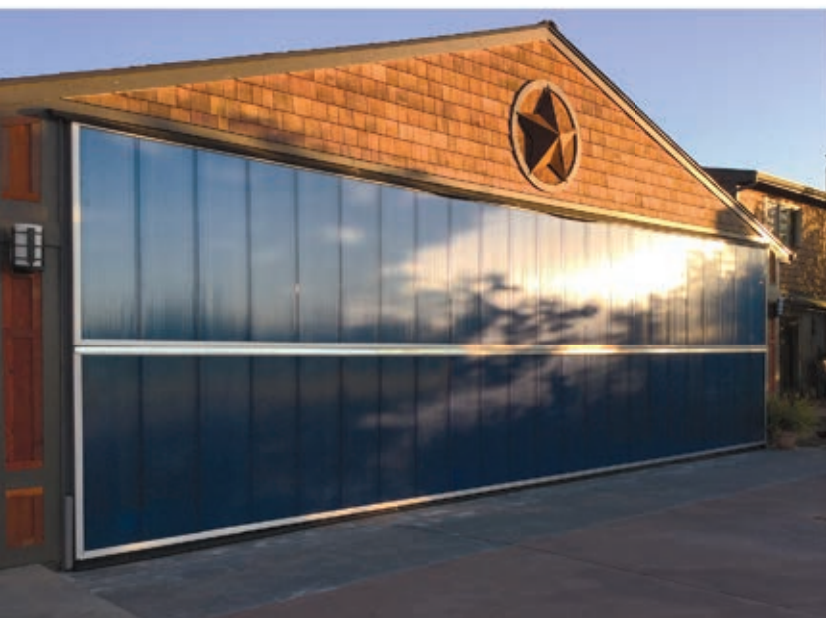


Oregon Hangar

Polycarbonate-Clad Hangar Door, North Plains, OR

With the decorative star and patriotic blue front it has all the looks of a hangar home that you might think was owned by Captain America. Jim Weitman, of Sherwood, Oregon, and his wife, Star, live on a private grass airstrip just outside of North Plains, Oregon. The hangar portion of the home measures 40' x 40'.

The Schweiss bifold liftstrap door on the hangar has a clear opening width of 38' and 9' 8.75" in height. It is also equipped with automatic latches, electric photo eye sensors and a remote opener. The blue polycarbonate cladding really brightens up the exterior of the door. "With the exterior enhancements, including a new roof, cedar siding and a colored concrete apron, they really wanted to replace the old style twin 20' metal garage hangar doors with something that really stood out and complimented their lifestyle."





Pen Factory

Pen Factory, Silicon Beach, CA

Santa Monica, California's Pen Factory, a former Paper Mate pen factory, was renovated into a 222,000 sq. ft. multi-tenant twin-building creative workplace. This prime real estate in Silicon Beach is an emerging hub for the LA creative class that's home to the latest advancements in technology, E-commerce, media, and entertainment.

Included on the renovated design is the inclusion of a 8' 9" x 19' 5" Schweiss bifold liftstrap door with glass cladding. It is equipped with an automatic latch system, electric photo eye sensors, a door base safety edge and back-up system that can be used in case of a power outage. The bifold door is being used by DreamWorks Animation media company to bring larger items in and out of the building.





Pike Motorworks Apts.

Pike Motorworks Apts., WA

It's been said that ideas are the source of innovation. They propel us forward, fueling new insights and breakthroughs. Capitol Hill's historic auto row; home of Pike Motorworks is the next chapter of renaissance, offering über-luxurious apartments and unrivaled amenities.

Adding to the historic look of the building are two custom-made decorative Schweiss bifold liftstrap designer doors; one of which is 11' 10" x 11' 11" and another at 11' 1" x 10' 1." Instead of the conventional metal, glass or wood exterior cladding, these doors have a decorative steel exterior 12 gauge steel cladding that blends in very nicely with the exterior brick of the apartment building. They wanted the architectural feel and look of a fence and at the same time they wanted to keep the building appeal. The doors, located on each side of the building, provide a pedestrian walk-through atrium between buildings and can be closed in the evening.





Raven LA Show Containers

Raven Show Containers, Los Angeles, CA

Raven Production Management Co. of New Orleans constantly challenges itself to bring revolutionary production solutions to its clients from the smallest nightclub events to entire festival sites. Raven can enhance the experience with state of the art sound equipment, avant-garde lighting systems, and cutting edge video solutions. Adding to their repertoire of skills was the construction of arena and concert container units that will be in use at several events in the Los Angeles area and across the country. Raven ordered 13 Schweiss bifold liftstrap doors for these container-building units. The custom-made doors are 13'3" x 7'2".

Describing them as containers is an understatement; these 15' x 15' x 15' permanent units are very versatile and are being used for much more than storage or as event food concession or product sales buildings. The unit designed for Bud Light has an interactive photo booth and alongside it is an area where people can enjoy a cold one.





Yankee Stadium

Yankee Stadium, New York City, NY

The simplicity of design, along with the liftstrap design was a primary reason why Schweiss Bifold Doors were chosen for Yankee Stadium's winter off-season family-friendly enhancements. The largest of the custom-made bifold doors is 27'5" x 11'4," followed by two 23'4" x 9'2" doors and two 21'10" x 9'2" doors. All the doors are fitted with electric photo eye sensors, black liftstraps, manual latches and keyed opening and closing switches. Four of the doors are clad in a high tech brushed aluminum. They finished the facade and the door to basically match itself so when the doors are down they blend in with the facade and don't reveal what's inside.

One of the stadium doors performs functions at the AT&T Sports Lounge located at the mezzanine level on the left field line. The AT&T door is clad in wood and tile on the outside and when it is closed you cannot tell it is an operational door. Two additional concession/bar areas, with two doors each set at right angles, are located in the right centerfield and left centerfield areas on the Triple Zero level.





Sam's Tavern

Sam's Tavern, WA

Sam's Tavern, a new Pike Street, South Lake Union bar and restaurant in Seattle, WA has been described as a "Woodsy, Whimsical" bar. USA Today hailed it as one of the top seven places in the U.S. for a spectacular Bloody Mary.

Two Schweiss hydraulic doors open to an outside courtyard giving the establishment additional seating. The hydraulic doors are clad in glass and can be opened even on rainy days to keep patrons dry while enjoying the outdoor patio area. Each custom-made door is 11'8.75" wide by 9' tall and has electric photo eye sensors. The hydraulic pumps that run the strong Schweiss cylinders are mounted inside the building near the doors.





Sterling Aviation H.S.

Sterling Aviation High School, Houston, TX

When it came down to ordering a door for their new hangar at Ross Shaw Sterling Aviation High School in Houston, Texas, Schweiss Doors was chosen to provide a bifold liftstrap door for their new school. There aren't many high schools in the U.S. that offer this type of education to the extent that they do to continue on to give students a chance to get flight certified.

Their new hangar is set up to hold the two aircraft. The bifold liftstrap, aluminum frame door is 49'6" x 20'2". The door has galvanized windrails and siderails, a keyed switch entry system, electric photo eye sensors and is windrated for 120 mph. Two rows of windows — 12 total, on each half of the door let in an ample amount of available daylight into the hangar.



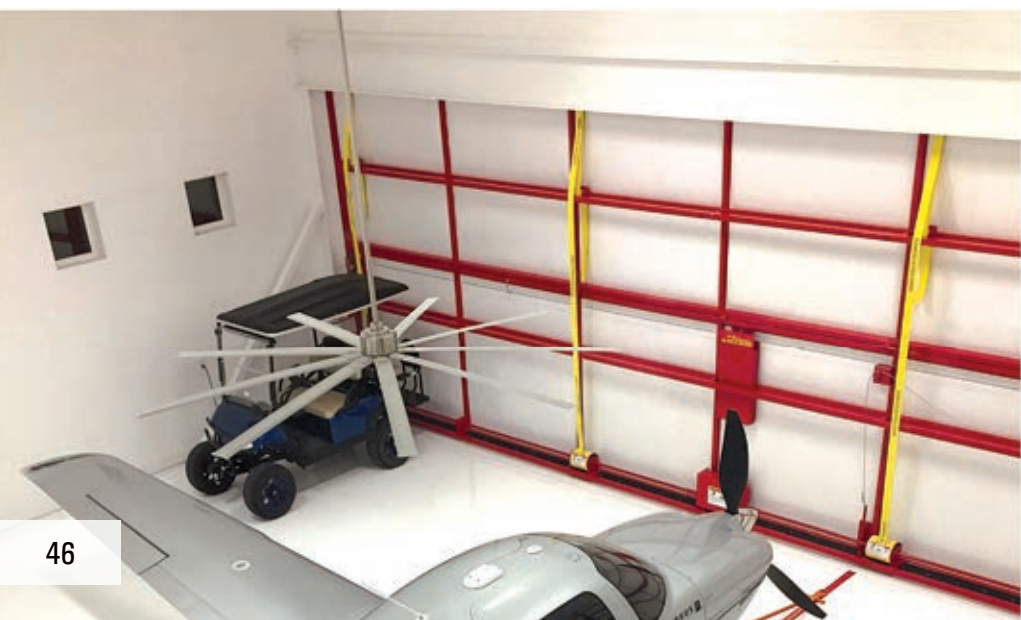


Texas Hangar Home

Hangar Home, Boerne, TX

'Jesse from Texas,' as he prefers to be known, is the elated owner of a Schweiss bifold liftstrap door. He and his family live in a stunning 5,000 sq. ft. hangar-home just a taxiway from the landing strip at Threshold Ranch in Boerne, Texas at the outskirts of San Antonio.

His 2,000 sq. ft. attached hangar houses his 2008 Cirrus SR22 G3 Turbo "Perspective." Jesse became familiar with Schweiss Doors during visits to the Oshkosh airshow and had seen Schweiss doors at various airports. His hangar has a 48.7' x 12.1' custom made bifold liftstrap door complete with a remote opener, a red painted frame for a great protective look, and an autolatch and windpin setup that will keep it tight to his hangar even in the stiffest West Texas winds strong enough to make a cowboy cry.





Bi-Rite Cafe Kiosk

Bi-Rite Cafe Kiosk, San Francisco, CA

Many times, you will find Schweiss doors located in high pedestrian traffic areas where establishments are open to serve the public attending various functions. Such is the case with the Bi-Rite Cafe sandwich and ice cream kiosk located adjacent to the San Francisco Civic Center and mayor's office.

Five liftstrap bifold doors were installed on the sidewalk kiosk for all-around service. The main door stands at 49' wide x 10' tall. The others range from 17' and 8' wide to 10' tall. The attractive cladding design on the doors consists of laser-cut stainless-steel panels that really make the kiosk and doors stand out. The doors remain open during business hours and then can be locked shut with an automatic latching system to protect its contents when not in operation.





ME Yacht Restoration

ME Yacht Restoration, Holland, MI

ME Yacht Restoration needed some huge doors. They installed a 46' x 34' Schweiss hydraulic door and a 47' x 30' bifold door on their new state-of-the-art boat storage facility. ME Yacht Restoration can lift and store nearly any vessel on the Great Lakes. Their Kropf hydraulic trailer is able to launch and retrieve boats up to 100 tons and is one of the largest (if not the biggest in the world) of its kind.

"Both doors are used primarily for the same purpose, to get boats in and out," said Operations Manager, Eric Evenhouse. "Over the years, we have learned that clearance is a big issue for getting the big boats in - we wanted to get into a different market with the 70-plus footers. It always seemed that limitations were always height in these big buildings.





Bobby Hotel Bus

Bobby Hotel Rooftop Bus, Nashville, TN

This 1956 Greyhound Scenicruiser bus was hoisted up to the Bobby Hotel rooftop in Nashville. Two Schweiss hydraulic doors open up the side and back of the bus. It was totally renovated inside by Hemphill Brothers Coach Company. A Schweiss dual-pump system with electric motors, were placed 60 feet away inside the swimming pool mechanical room to operate the hydraulic cylinders on the 18' 6" x 8' side door and 8' x 9' rear bus door. The doors can be opened and closed with handheld remote openers.

Castlerock Asset Management, which undertook the adaptation, wanted "to create an immersive hotel that feels like the quintessential Nashville experience and mirrors musician's life on the road." "We wanted to create a unique experience on our rooftop different than any other hotel in Nashville," noted Castlerock Vice President Ray Waters."





BPA Maintenance Bldg.

BPA Maintenance Building, Southwest Washington

The JD Ross Maintenance headquarters facility near Portland, Oregon is Bonneville Power Administration's (BPA) newest base for transmission line maintenance crews and engineers. The Schweiss lifstrap drive-thru doors and building met Net Zero Energy criteria; meaning that on an annual basis, the project produces as much or more energy than it uses. Eight of the 11 bifold doors are 27' x 16', one other is 23.4' x 16' and the remaining two are 12' x 16'.

Windows on the building and doors have double-glazed low E-Coating and were manufactured with a "bird-friendly" grid etched into the glass to prevent birds from colliding with the glass surfaces. One reason Schweiss doors were chosen was so they could use whatever cladding they wanted on the doorframe and they wanted to have super-thick R-30 insulation. They also wanted doors that opened to the outside so they wouldn't interfere with the bridge crane or overhead infrared heating.

(Photos by Stephen Cridland)





MN State Fair

Minnesota State Fair, Falcon Heights, MN

Two prominent buildings at the Minnesota State Fairgrounds feature Schweiss Bifold Designer Doors. "The Hangar" with two 36' x 17.6' Liftstrap Designer doors brings thousands of visitors in for "Craft Flights & Tasty Bites."

Hubbard Broadcasting Channel 5 News (bottom right) placed three 21.6' x 14' Liftstrap Designer doors on its building adjacent to the grandstand. They deliver live broadcasts from this location throughout the 12-day duration of the state fair that draws nearly 2 million visitors annually.



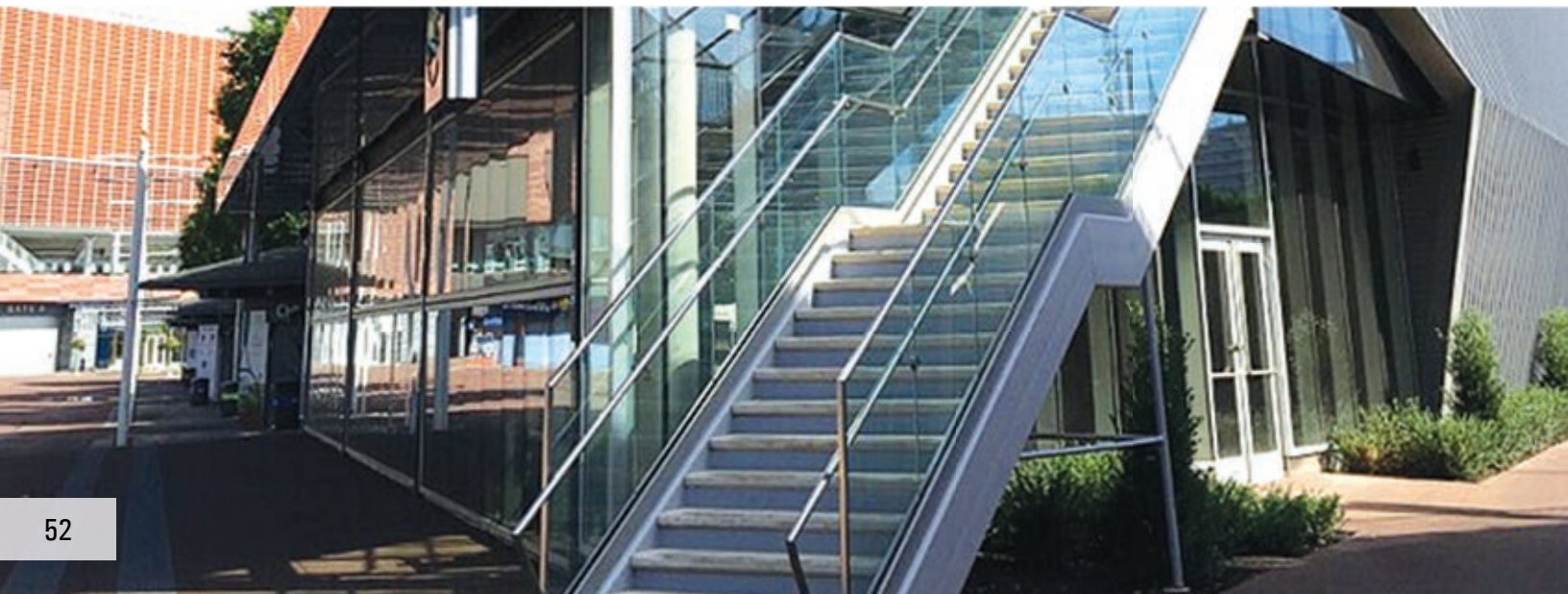


National Tennis Assoc.

US National Tennis Association, Queens, NY

The Billie Jean King National Tennis Center in Flushing Meadows— Corona Park, Queens, New York is one of the world's largest public tennis facilities and home to the U.S. Open, and its centerpiece arena, Arthur Ashe Stadium.

Three Schweiss bifold lifstrap designer doors were part of a USTA \$550 million renovation. Each door, measuring 25.8' x 9.10', has an automatic latching system, stainless steel side and wind rails and warning lights and horns. The custom-made doors are all clad in glass.





NY Hydraulic Window

Museum Hydraulic Display Window, New York, NY

Crowne Architectural Systems Inc. out of New Jersey installed a 9' 6" x 15' hydraulic display window into this New York City Museum. The custom installed - all metal window frames are clad with glass and powered by a hidden hydraulic pump to run the hydraulic cylinders. The window has electric photo eye sensors and a door base safety edge.





Tin Can Projects

Tin Can Project Doors and Skylights, Los Angeles, CA

Housed inside a Los Angeles 50,000 sq. ft. building, dubbed “The Tin Can,” a nickname referring to the pre-engineered metal Butler Building type, are photography studios that at times like to make use of available natural light. This light filters down through the building via rooftop custom-made Schweiss bifold skylight doors.

Two of the liftstrap skylight doors are 24' x 15.2' and four others are 23.5' x 14'2'. In addition, two other 23.6' x 15' bifold doors were placed on the side of the building. The skylight doors have weatherproof electrical components and 1" thick clear glass panels to keep the elements out of the building. The ground-level doors can be opened out to a small patio surrounded by a planter wall, creating a nice indoor-outdoor space.



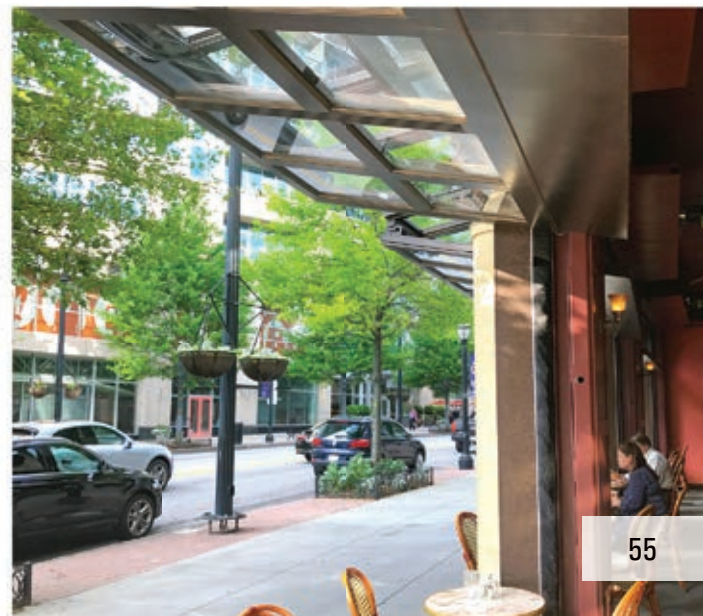


Cafe Intermezzo

Cafe Intermezzo, Atlanta, GA

Schweiss doors was approached to replace existing roll up doors at Cafe Intermezzo in Atlanta, GA. The old doors were failing and the top pivoting rods were broken. The three new 14' 6" x 8' lift-strap bifold doors act as a large glass storefront system, an awning for diners when open and security gates when closed.

The custom-made bifold designer doors have hurricane wall pins, manual latching systems and top-drive electric motors.





Warren Harding H.S.

Warren Harding High School, Bridgeport, CT

The new Warren Harding High School in Bridgeport, Connecticut included a 34.8' x 26.11' Schweiss bifold liftstrap designer stage door. It has galvanized wind and side rails, a top-drive motor, electric photo eye sensors and a door base safety edge with black liftstraps. The bifold door allows the stage to double as an amphitheater. Construction on the school earned it a LEED Gold Certification (Leadership in Energy and Environmental Design).

Initially, the architect did look at another door company represented by a local rep and found out there were limitations to what they could do. The other manufacturer actually recommended Schweiss for this concert and stage door.





Struther's Garage Doors

Struther's Winnipeg Garage, Canada

A lot of planning goes into new home construction. Tom Struthers of Winnipeg, Canada extended his attention to detail right down to his garages. The Schweiss Bifold liftstrap garage doors have an enhanced appearance utilizing a vertical pine wood exterior to highlight each of his three doors.

His three garages all have Schweiss bifold liftstrap doors on them with photo eye sensors, multi-channel remotes and automatic latching systems. The largest of the bifold garage doors is 10' x 10' and the other two are each 8' x 8'. Attractive exterior vertical pine tongue and groove cladding on all the doors really gives them an appealing appearance. Struthers is an old British car aficionado. Among his collection are four Triumphs dating from 1960 to 1981; a 1953 Jaguar XK120 and a 1953 Austin Healey BN1 and an Austin Healey BN1 Cornet.





Superba Restaurant

Superba Restaurant, CA

Superba Food + Bread, which bills itself as an industrial-chic café and bakery offering Californian fare, rotisserie dishes and keg cocktails, likes to try new things and break some rules. Part of trying new things included placement of a Schweiss bifold glass door at the front of the restaurant. They wanted the space to open up entirely to the exterior and maintain the open structure of the ceiling. The bifold door allowed them to do this better than a typical garage door that would have conflicted with lighting hung from the ceiling.

Superba decided on a custom-made 14' 3.5" x 9' 8.5" glass-clad bifold liftstrap door with black straps, electric photo eye sensors and manual latches. When they open for business at 7 a.m. they also open their Schweiss glass bifold door to welcome diners in from the sidewalk.





Texas Garage Door

Garage Door, The Woodlands, TX

As a 30-year career pilot working in the Captains seat for Continental and United Airlines Kirk Simonds has walked away from many successful landings. Now retired, he decided to do a complete remodel from the slab up of his garage that included a Schweiss 18' x 7' bifold liftstrap door. The door is equipped with an automatic latch system, remote opener and Simonds can use his backup generator to open or close the door in case of a power outage.

The door was installed in the nick of time before Category 4 Hurricane Harvey started on its \$200 billion wave of destruction when the eye of the hurricane passed over nearby Rockport and Houston. It rode out the high winds and water that had cars floating and streets flooded up to people's necks.





University of Mass.

University of Mass. Aluminum-Clad door, Amhears, MA

Schweiss bifold and hydraulic doors have been known to have exterior cladding utilizing many materials from decorative wood, glass, stucco, brick and much more. One that really stands out is the aluminum plank cladding that was put on a 38' 1" x 15' bifold liftstrap door in use at the South College Academic Facility at the University of Massachusetts in Amhears.

The aluminum plank-clad 38' x 15' Schweiss bifold liftstrap door is being used on a new steel building. This very attractive designer door has electric photo eyes, black liftstraps, automatic latching system and a door base safety edge. The interior of the door is clad with corrugated aluminum siding.





VA Helicopter Hangar

Helicopter Hangar, Purcellville, VA

This privately-owned helicopter hangar in rural Purcellville, VA recently received first place 2017 Building of the Year award in the category of "Commercial Buildings under 5,000 sq. ft." The owner, Chuck Kuhn and Fuog/InterBuild designed the post-frame barn-style hangar that really stand outs with a Schweiss hydraulic one-piece 55' x 16' designer door. A stronger lift system was incorporated for the additional 7,100 pounds of wood cladding on the door. The vaulted ceiling has 1x6 tongue and groove woodwork. A high loft with four windows brings maximum amount of daylight into the hangar.

Garland LaRue, Project Manager for Fuog/InterBuild, Inc. said he discovered Schweiss Doors for the first time through a Schweiss Door Internet search and said the hangar owner loved the hydraulic door. "I think the quality of construction of the hydraulic door is wonderful. We definitely would use it again and recommend it to others. It was also easy to install, the shipping of it and customer service was great on all points, Brent and Jeremy at Schweiss were very helpful," said LaRue.





Music Factory

Music Factory, Irving, TX

The Toyota Music Factory, formerly known as Irving Music Factory, is a new \$200 million 410,000 sq. ft. American Entertainment complex located in the Las Colinas neighborhood of Irving, Texas. It has 20 restaurants and bars and retail space that includes a movie theater and bowling alley.

The Pavilion at The Music Factory, is the centerpiece to the Music Factory. Located on the exterior of the pavilion at the outside amphitheater are a series of seven side-by-side Schweiss bifold liftstrap doors ranging in size from 36.9' to 35.1' in width and all with a clear opening height of 25.6'.

Seven separate doors were used, instead of two or three large doors, because they partially wrap around the pavilion building that has about a 10.5-degree curve to it. These seven doors can be opened during sold out concerts approximately a half hour prior to the time an indoor performance is being held.





Kingston Garage

Kingston Garage, Oklahoma City, OK

The garage on Leo Kingston's Oklahoma City 4,200 sq. ft. single level home is something to behold. The glistening epoxy floor is something you might expect to see inside the home's entrance and the contemporary look of the walls and ceiling surround a very nice looking Schweiss hydraulic glass designer door. The Schweiss hydraulic door has a clear opening of 15.3' x 7.1' and is equipped with electric photo eye sensors and a remote opener.

In order to give extra stability, to compensate for the extra weight of the glass-clad door, Kingston ordered it with a freestanding header that attaches to I-beams at the side and header of the door. He also lifted the ceiling in his garage from 9 ft. to 13 ft. in order to put a stackable car lift inside.





Chappel Hill Garage

Chappel Hill Garage, Chappel Hill, TX

Donna and Greg decided to have their new country home built with two Schweiss hydraulic designer doors; one on a 3,000 sq. ft. garage/barn and the other placed on the basement party room of the home. The doors are 29.7' x 9.7' and 20' x 9.4', both equipped with photo eye sensors and remote opening systems. The exterior of the garage door is clad in 24 gauge metal panels and the interior of the basement door is handsomely clad with Vertical Douglas Fir.

"We like the shade that the hydraulic doors create when opened; the shade is huge — they just make sense in the south where we look for ways to stay out of the sun. For our party room, when you open the door up you've just added a covered porch to it. That's really wonderful," said Donna. "I can't imagine any ordinary garage doors on where they went. I like how massive they look; they bring a presence you can't get with a regular garage door."





Luxury Hillside Home

Luxury Hillside Home, Los Altos, CA

This awe-inspiring Los Altos, California luxury home, designed and owned by two architects, was featured in the annual Silicon Valley Modern Home Tour. The Great Room of the home features a Schweiss 36' x 23' tall glass hydraulic curtain wall door.

The entire façade of the home can be opened like an aircraft hangar door. The center of the Great Room has a circular glass-floored dining area cantilevered over a 60 ft. long indoor swimming pool that looks out over the scenic bay.





Federales

Federales Mexican Restaurant, Chicago, IL

Nothing says summer like tacos and tequila. Chicago's newest sprawling Federales Tequila & Tacos restaurant and bar in the West Loop of Chicago is a great neighborhood bar with incredible food. Federales vacation atmosphere features a fully retractable roof and two Schweiss bifold liftstrap 14' 3" x 14' 8" designer doors that open to their beer garden.

They like the look and feel of the doors, as well as how open the space feels when they are in use, not to mention the 154 additional seats in the Tequila Garden. They open them when it's warm enough to have outdoor dining and drinking.





Guide Dogs of America

Guide Dogs of America, Sylmar, CA

Guide Dogs of America (GDA) unveiled its latest expansion in Sylmar, Calif. The new 16,000 sq. ft. building celebrated the dedication of the Macki and Phil Singer Visitor and Education Center. Its mission is to provide professionally trained guide dogs free of charge to blind men and women across the U.S. and Canada and to graduate more guide dog teams and instruction in their use.

Schweiss Doors provided the new facility with a 41'10" x 11'2" bifold liftstrap glass designer door. The door is fitted with photo eye sensors and is powered by two top-drive 3 h.p. 460v electric motors.





NY Storefront

Storefront Doors, Brooklyn, NY

This unique steel bifold door storefront in Brooklyn adds a touch of class and security. Hugging the southwest corner of Long Island, New York, Brooklyn's earlier identity was mostly hitched to Coney Island Beach and the Brooklyn Dodgers of baseball immortality. Today the city is enjoying a renaissance of rediscovery by artists, retailers, ambitious contractors, and creative landscapers; including the Andre Kikoski Architect firm which just wrapped up the complete renovation of two empty, abandoned warehouse buildings on 22-28 Wyckoff Ave.





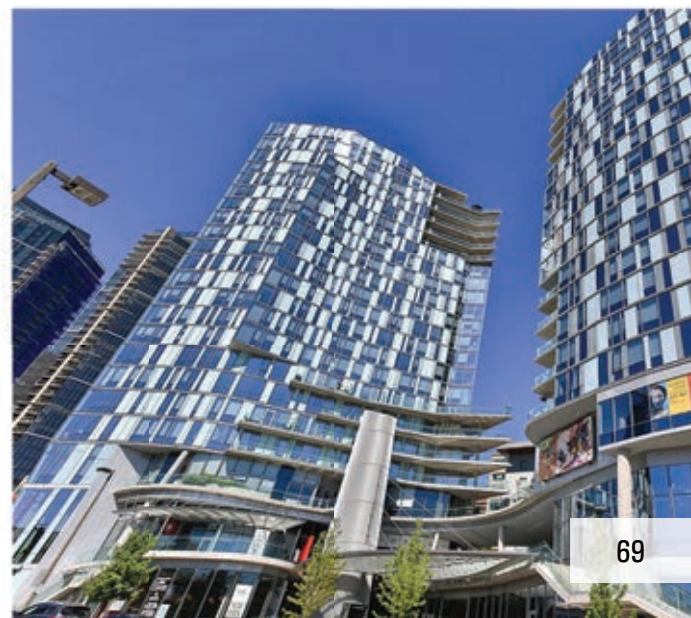
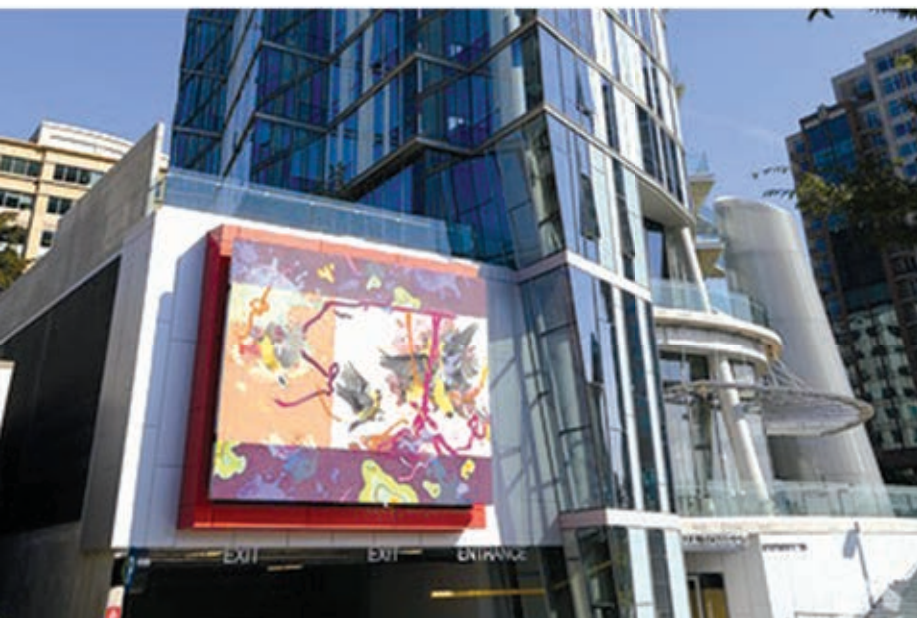
Soma Towers

Soma Towers apartments, Bellevue, WA

Residents in the new 273-unit 23-story Soma Towers highrise apartment in Bellevue, Washington now have access to an outdoor piazza via Schweiss bifold designer glass doors.

The largest bifold liftstrap door is 16.5' x 7.9'. A second door has a clear opening of 14.10' x 7.25'. Both bifold doors have automatic latches, electric photo eye sensors, door base safety edges and an emergency backup system in case of loss of power.

This new highrise is one of more than 50 projects constructed by Su Development of Bellevue, Washington in the greater Seattle area.





Under Armour Storefront

Under Armour Storefront Hydraulic Door, Baltimore, MD

A top of the line Schweiss Hydraulic Designer Door graces this Under Armour storefront.

Schweiss Designer Doors don't get much better than this. Under Armour Corporation in Baltimore, Maryland ordered this very attractive and unique metal perforated hydraulic one-piece canopy door as a showpiece for their store and office building in Baltimore, Maryland. The 28' 10" wide x 12' 140 mph wind rated door features two distinctly lighted Under Armour billboard-style logos which can be seen for miles around.





Sway Thai Restaurant

Sway Thai Restaurant, Austin, TX

Schweiss Doors adds style to the spicy new Sway Thai restaurant in Austin, Texas. The hydraulic door opens to a large communal table area where diners can eat and socialize. "We love the door. It's great and we get a lot of comments. When it's closed, people don't even realize it's a door because aesthetically, it speaks so well to the interior design," said the restaurant owner, Jesse Herman.

Austin is a city of big flavors, but interestingly enough there are few that specialize in Thai food. That's where the long-awaited Thai Restaurant called "Sway," (meaning elevated, delicious) tops the bill.





NC Carriage House

Carriage House, Cornelius, NC

Carriage House helicopter hangar is very likely the most unique in America!

The Carriage House on the lakeshore property of Sid Morris, Cornelius, NC is very likely the most unique in America! It doesn't house horses and horse buggies. It doesn't house antique autos. Instead it houses his R44 helicopter. And that chopper gets to the Carriage House by first landing on a helipad on the end of his 200' dock. A small electrically driven dolly then gently lifts the chopper with operator and guides them to the proper stall inside this remarkable 4-star carriage house.





Red Bull Headquarters

Red Bull Headquarters, Santa Monica, CA

HLW International of Santa Monica, CA, was charged with turning a 1950s-era brick building into the new home of Red Bull Energy Drink. As part of that process, the firm ordered the demolition of a section of the building's original roof to create an interior courtyard, and then constructed within the courtyard a 40'-wide by 250'-long, non-functioning skateboard ramp, which has offices and conference spaces beneath.

With the ramp being the focal point of the 105,000 sq. ft. building, the architect looked for a way to create a seamless connection between the interior of the building and the courtyard space. That was accomplished with a glass bifold door. Schweiss Doors of Fairfax, MN, manufactured the door, which weighs approximately 10 tons. To operate the door, two electric motors and eight lift straps are used. Schmidt Construction of Williams, CA, handled the delivery and installation of the door. Inner Space Constructors of Rancho Dominguez, CA, was the project's general contractor and was responsible for demolition and renovation.





RiverEdge Park

RiverEdge Park, Aurora, IL

RiverEdge Park and Music Garden is a venue that not many people in the United States have heard of yet, but they will. It is becoming the centerpiece in a 10-year master plan for the city of Aurora, Illinois. Schweiss Doors in Fairfax, Minnesota was called upon by the architectural firm of Muller + Muller, Ltd of Chicago which excels in architecture, planning and interior designs to provide four Designer Bifold Doors on the stage building and at a concession stand below the guest services building.

The designer style Schweiss Bifold Doors have an exterior cladding of cedar slats 3 1/2" x 3/4," with spaces between them. Extra steel was added at the Schweiss factory for extra support. Pressure treated wood was also added to screw the cedar slats to.





House of Air

House of Air, San Francisco, CA

House of Air is an indoor trampoline park located in a historic airplane hangar at West Crissy Field in the Presidio of San Francisco, California, not far from the Golden Gate Bridge. What used to house high-flying aircraft, now houses hundreds of energetic youth-minded people; some of whom can now exercise a different style of high flight.

With all the activity going on in this building, it's nice to be able to open the doors for some fresh or cool air. A 41' 6" x 19' 3" custom made Schweiss bifold liftstrap glass designer door is installed at the entrance to the large hangar building. Not only does the glass door open for ventilation purposes, but it gives those inside and out a beautiful view when open or shut. It's also quite convenient for moving equipment in and out of the building. The door is equipped with electric photo eye sensors and a door base safety edge.





Doc B's Kitchen

Doc B's Kitchen, Chicago, IL

Doc B's Fresh Kitchen in Chicago was established to become an extension of your own kitchen. The Gold Coast location features a 16.2 ft. wide x 7.9 3/4 ft. tall Schweiss hydraulic glass designer door equipped with electric photo eye sensors. The door opens to an outside dining area which seats 20 customers.

"What's unique about the door is when it's open it creates this natural canopy. You can sit right up next to the window. So if it's rainy or misting outside you get the benefit of the outside visual and still have the advantage of that outdoor/indoor feel," explained the owner. "I think we looked at every conceivable door type available. We looked at bifold, horizontal and vertical, scissor type systems, and overhead glass garage doors as well. We mostly wanted a strong connection to the outside street energy of Doc B's."





Kicking Horse Residence

Kicking Horse Ski Resort home, British Columbia, Canada

Situated at the base of the Kicking Horse Mountain Resort in the Canadian Rocky Mountains in British Columbia, this 3,500-square-foot residence is a gathering place for an active family of five. The clients desired a space that would provide a direct connection to the landscape for seasonal recreation and the flexibility to accommodate larger groups of family and friends.

On the garage is a Schweiss one-piece hydraulic designer door clad in Clear Heart Western Red Cedar. The custom-made 20 ft. 8.5" x 8.1 ft. door has electric photo eye sensors, a door base safety edge and remote opener. "From an architectural perspective it's fantastic. We really like the product, the appearance of it and the way it can be integrated seamlessly with the exterior materials of the house," noted Architect Ray Calabro.





Sacramento Kings Stadium

Sacramento Kings Stadium, Sacramento, CA

The Sacramento Kings Stadium Golden 1 Center in downtown Sacramento, CA, was just completed. The arena hosts concerts, conventions and other sporting events with capacity at about 19,000. The Sacramento Kings basketball team began using the arena for the 2016–2017 NBA season.

Schweiss Doors engineered and built five bifold/strap latch doors used at the stadium entrance. Three of these doors measured 29' x 41'5" and the other two were 29'4" x 41' 5". Each door is lifted by three 5 h.p. motors and the liftstraps are 6" width, compared to the usual 3" width. The doors, with glass, weigh in at about 28,000 lbs. each. The Schweiss bifold glass doors allow the Delta Breeze to serve as a natural cooling system, pulling air in through small vents found under the seats in the stands. The total cost of Golden 1 Center is estimated to be \$507 million.





California Bike Transit

Bike Transit Station, Santa Monica, CA

Bikes are taking over America. Major cities like New York, Chicago and San Francisco are launching public bike sharing systems for the first time, joining Boston, D.C. and Denver. In these metro areas most auto trips are two miles or less. Giving up that short trip in the auto saves cash on gas, parking, tickets and time in traffic. It also limits car trips in and out of the city. Schweiss Doors provided the city with three custom made 19' 5.63" x 7' 1.56" straplift bifold glass doors for its bike transit project in Santa Monica, California.

The bifold doors are put to good use each day. For safety purposes, the doors were ordered with photo eye sensors, door base safety edges and have an emergency backup hand crank should there be a power outage. Galvanized side rails were put on the doors due to their close proximity to the ocean as a rust preventative. City officials said the bike center provided \$106,826 in revenue to City Hall just months after its opening.





Korthuis RV Garage

Korthuis RV Garage, Lynden, WA

'Crazy Cool' bifold door sidesteps zoning restriction for unique motorhome garage! Now you see it, now you don't. Herb Korthuis of Lynden, Washington needed to find a way to be able to garage his 45 ft. motorhome, but a local zoning ordinance prevented him from building a garage with a door higher than 8 feet. It was Schweiss to the rescue with a 16 ft. x 12 ft. bifold liftstrap door, which when in the closed position gives the visual of an 8 ft. door.

Korthuis had a contractor attach a conventional garage door front with windows to the bottom half of the Schweiss doorframe and finished off the top with siding that exactly matched his new home. In the closed position you can just barely see the seams on the door sides. It alleviated the building inspector's concerns.





Barrel & Bushel

Barrel & Bushel Restaurant & Bar, Tysons Corner, VA

When Barrel & Bushel, a new beer-centric restaurant in Virginia says “Handcrafted Just for You,” they are referring to more than their location, extensive menu and beverage list, but also to the upscale surroundings in which you can enjoy a place to relax and visit. Barrel and Bushel is located in the heart of Tysons Corner’s business district on the Tysons Corner Center Plaza at the newly built Hyatt Regency Hotel at 7901 Tysons One Place.

The bar is large and also opens to outdoor restaurant seating. Two Schweiss custom-made bifold liftstrap glass doors open up to the outside. One door is 24’ wide x 7’ and opens to an outdoor seating area and the other bifold door, 24’ wide x 3’ 7” opens to outdoor patrons who can belly up to the bar. The glass door gives an unobstructed view of a plaza and garden area outside in all weather and allows a significant amount of light in to brighten up the bar. The bifold doors open to an outdoor seating patio, which now can accommodate an additional 70 people. Both doors have electric photo eye sensors.





SilverWing Airpark

SilverWing at Sandpoint Airpark, Sandpoint, ID

This unique fly-in airpark community is set between Schweitzer Ski Mountain and Lake Pend Oreille, one of the West's largest lakes in northern Idaho. The site has an exclusive prototype home for aviators and their families to see and building lots for sale.

A lot of thought went into choosing the doors for the hangar homes. Two sets of Schweiss Bifold liftstrap doors, each 45' x 14' 9" are at the model residence. The decorative cladding gives them a real designer door look. Building plans offer five residence-style hangars and two commercial-style hangars.

SilverWing at Sandpoint was designed for pilots and aviators with direct access to the Sandpoint Airport (SZT) in a beautifully landscaped airpark community. It offers a rare opportunity in aviation real estate.





Newmarket Operation Center

Ontario Municipal Operations Center, Ontario, Canada

Newmarket, Ontario, Canada is a town projected to grow to approximately 98,000 by 2026. Due to these growing pains Newmarket was overdue for a new municipal operations building.

The new \$20.2 million Operations Centre is a 65,000 sq. ft. facility meeting the Canada Green Building Council's energy efficient standards. An aluminum curtain wall on the glass bifold doors was something that they wanted for maximum performance and to look great. The building is heightened by 20 very impressive glazed glass Schweiss Bifold Liftstrap "Green Doors." Ten doors on each side of the building are designed for easy access and drive-through capabilities. Adding to the attractiveness are large etched numbers on the glass of each door designed for the drivers and others coming to the building to see immediately which bay to go to. They also provide passive ventilation and reduction of the energy load. The facility received the 2009 Award of Excellence from Canadian Architect Magazine for innovation and cutting-edge environmental features.





Opus One Winery

Opus One Winery, Oakville, CA

The design of the vineyard shop embraces the partnership of Opus One and Chateau Mouton Rothschild, by taking the concept of the centuries-old courtyard stables of Bordeaux and merging it with modern materials. So how does Schweiss Doors fit into the picture of buildings that literally rise out of the earth through a mix of classical European and contemporary Californian elements?

Schweiss supplied eight bifold and hydraulic doors made of perforated stainless steel used for the rain screens around the washing/fueling area, clerestory windows and exhaust fans. The extended eaves and rainscreen function as an effective shading system to minimize heat gain and provide a comfortable work environment. The benchmark architectural design makes it look like a solid sheeted wall, which doesn't appear to look like a door system. The architect was given the "Award of Excellence Building" accolades for its work on Opus One by Metal Construction News.



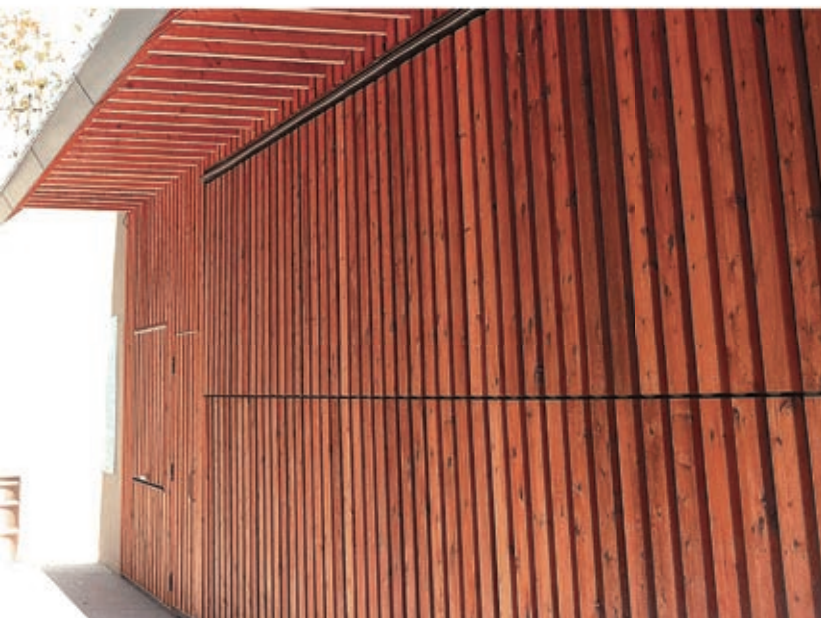


Lake Tahoe Boathouse

Lake Tahoe Boathouse, Sierra, NV

Schweiss boathouse doors have a reputation of showing up at some of the most beautiful lakes in America, but perhaps the most beautiful of them all is the 989 ft. deep Lake Tahoe which borders Nevada and California.

A new 40x30 ft. steel building was erected for the South Tahoe Standup Paddle rental business. It is also where a custom made Schweiss 32 ft. 11.5" x 10 ft. 11.25" Bifold liftstrap door with electric photo eye sensors opens up that building for business. The exterior cladding on the door consists of stained 2x6s spaced apart to allow for airflow into the storage area when the door is closed. Since the City of South Lake Tahoe initiated its Phase 1 redevelopment project, the area has drawn more tourists and there are a lot of other special events that take place to bring people in.





Blarney Stone Pub

Blarney Stone Irish Pub, Fargo, ND

This isn't one of those places that puts up a couple Irish flags and call themselves an Irish pub. Their atmosphere is much more Irish than other "pubs" in the Fargo, Moorhead area. It features a Stone Courtyard Bar area that seats 70 people with three 19'4" x 7'11" Schweiss bifold glass doors that can be opened, rain or shine. Connected to the Courtyard is a patio area that seats another 60 people. The Mezzanine Level on the main side of the building, just a short step up, has seating for 20 people and offers a grand view of the entire main bar. Total seating is just under 300.

They open the doors nearly every day in the Spring, Summer and Fall. Another nice benefit, as opposed to a garage style door, is the way they open outward providing an awning. When it rains outside, it doesn't rain in the building.



Louisiana Sports Hall of Fame

Sports Hall of Fame, Natchitoches, LA

The Louisiana Sports Hall of Fame opened its doors with a grand red carpet reception attended by throngs of inductees and sports fans in 2013. The beautiful 27,500 square foot museum is located downtown in the Historic District of Natchitoches.

Two Schweiss custom-made aluminum-framed one piece hydraulic doors, each measuring 14 ft. 11.5 inches wide x 11 ft. 5/8 inch tall, were made especially for this project. The architects called for a custom fabricated flat hinge design with pleated copper panels that control light. This was in order for the doors to blend into the wall, making it look like there actually wasn't a door there when in the closed position. The exterior doors are opened to bring exhibits in and out of the museum. An emergency battery system was also added to the order in case there would be a power outage.



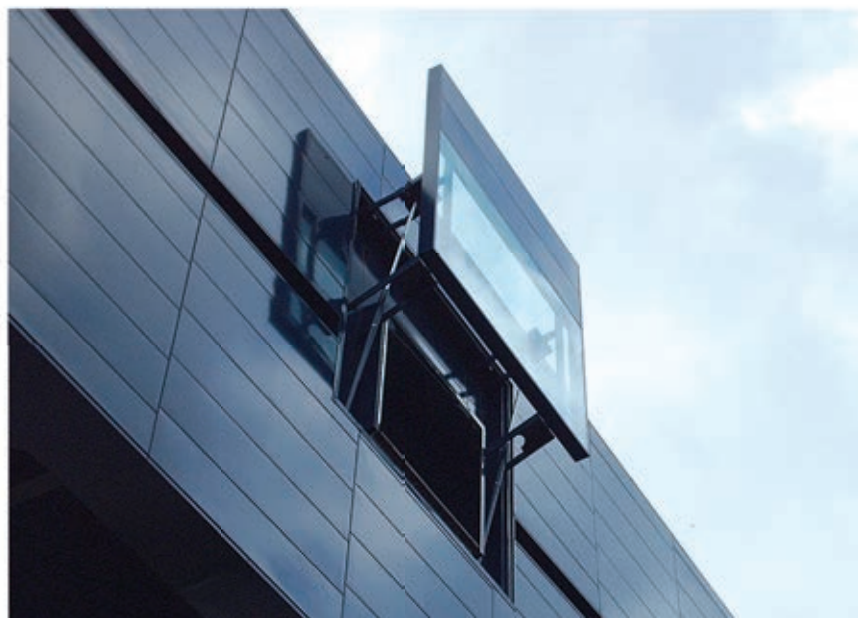
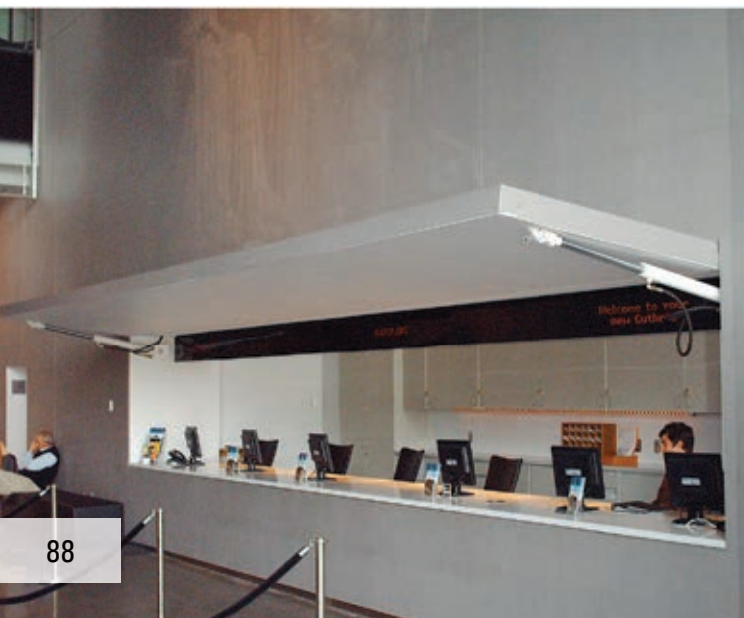


Guthrie Theater

Guthrie Theater, Minneapolis, MN

It seems only fitting that the one-of-a-kind Guthrie Theater in Minneapolis, MN, should have a door just as unique. In the case of the 285,000 sq. ft. Guthrie Theater, designed by French architect Jean Nouvel, the door is not really a door. It's instead a 17' x 16' operable window built into the side of the theater's Endless Bridge, an observation platform that cantilevers 178' outward from the theater's fourth floor lobby on the Mississippi River side. It provides spectacular views of the historic river valley, St. Anthony Falls, the Stone Arch Bridge, and the Mill Ruins Park.

To the lower left is an example of the new "One-Piece®" Hydraulic Door that is used as a ticket sales booth at the Guthrie Theatre. The modern and simple style of the door camouflages into the wall when closed with a seamless finish while it functions with both purpose and aesthetics. The door was designed by W.J. Higgins & Associates of Wausau, WI, and fabricated by Schweiss Doors of Fairfax, MN. It employs groundbreaking hydraulic technology to offer the theater's guests a breathtaking view of the adjacent Mississippi River.





Belgium Airforce Hangar

Aerodrome Beauvechain Helicopter Hangar, Belgium

When Belgian Airforce military personnel at Aerodrome Beauvechain needed reliable doors for their new helicopter hangars they went with the quality bifold straplift door offered by Schweiss Doors. The hangars required the door motors and limit boxes to be weatherproofed due to the fact they were largely clad in mesh for ventilation.

The custom-made doors were all 64.3 ft wide x 23.8 ft. high and upgraded to 47 mph wind speed and 4,188 lb. cladding load. In addition to that, the straplift bifold doors were fitted with autolatches, strap tension sensors, top overrides, photo eye sensors, bottom safety edges and internal and external beacon/sounders.





Custom Containers

Schweiss Custom Container Doors

Schweiss builds easy access hydraulic container doors. Schweiss Doors now specializes in customizing containers to accept hydraulic doors to open up the entire side and/or both ends for easy access. In addition to these doors, Schweiss can also build an attached lifting exterior deck on your container that will lift up or down at the touch of a button. Schweiss storage containers are perfect for a number of uses such as secure mobile offices, portable sheds, workshops, hunting shacks, food stands, etc.

At the top of each container door cylinder is a motor rated to lift 5,000 lbs. The DC drive utilizes 110 Volt AC power. Where there is no access to electricity, the door can be manually run with a cordless drill or generator setup. Doors are constructed with 2"x2" strong steel tubing. Containers can be custom-built and finished off to your liking.





SC Institute of Architecture

Southern California Institute of Architecture, Los Angeles, CA

SCI-Arc in Los Angeles, California, is a non-profit school offering undergraduate and graduate degrees in architecture. SCI-Arc's approximately 500 students and 80 faculty members work together to explore and test the limits of architecture. The school is based in the former Santa Fe Freight Depot in the Arts District in downtown Los Angeles.

The building design included two Schweiss bifold/liftstrap glass designer doors. The doors are 19' 1" x 9' wide and 16' 1" x 8.6' wide. Each door is equipped with autolatches, and electric photo eye sensors. One of the glass doors is at the entrance connecting to the new building and the existing shop. Directly over the top of that door they used the second bifold door as a skylight that can be opened up for natural light and occasional ventilation purposes. Special engineering was required in order to have the pitch of the door at a greater slope of 1/2" per foot to match the roof line.





Fort Carson Military Doors

Military Doors, Fort Carson, CO

Getting 150 doors installed at one location speaks rather strongly about the quality and reliability of your door provider. But that's the current scorecard of Schweiss Bifold Liftstrap doors at Fort Carson, Colorado in Colorado Springs where the U.S. Army special heated maintenance shops called TEMFs (Tactical Equipment Maintenance Facilities) required strong doors for structures big enough for Army tanks and other special military tactical vehicles.

That meant special translucent paneling with enough strength to withstand the 'blast load' criteria that is part of the terrorist attack prevention now standard procedure at any military installation. This means heavier doors with bigger load requirements than would be used in a typical commercial environment. Special windows were also installed in several of these bifolds.





Metal Shutter House

Shigeru Ban Metal Shutter House, Manhattan, NY

When Japanese architectural firm Shigeru Ban set out to create their new Metal Shutter House project in Manhattan, they approached Schweiss Doors with the idea of a “window-wall” that could open up to the beautiful New York City skyline outside. The goal was to create a connection with the city outside and Schweiss Lift-Strap Bifold Doors were the ideal solution to make that vision a reality.

The custom-built designer doors fit seamlessly into the living space and give the owners the ability to change the feel of the room with the push of a button.





Santa Monica Glass Door

Luxury House, Santa Monica, CA

Some of the nicest houses you'll ever see are located along the coastline of California. One such construction was completed on a Beverly Avenue home in Santa Monica. This door covers two stories of the home and opens up for a view of the ocean between closely located trees in its backyard. The Schweiss top-drive bifold designer doors have argon gas windows on them that are double-glazed with gas between to make them more energy efficient.

"The whole process of getting the door in place was 'Egyptian style.' — We opened the main entry to the house, took the header down and cut the walls to weave the bifold door through the house in two pieces. It took a bunch of heavy-duty dollies and about 26 guys to wheel it through the house so the crane could pick up the door by the frame on the other side of the house. The homeowner loves the door," said Nir Alon, managing partner of Los Angeles Construction & Development.





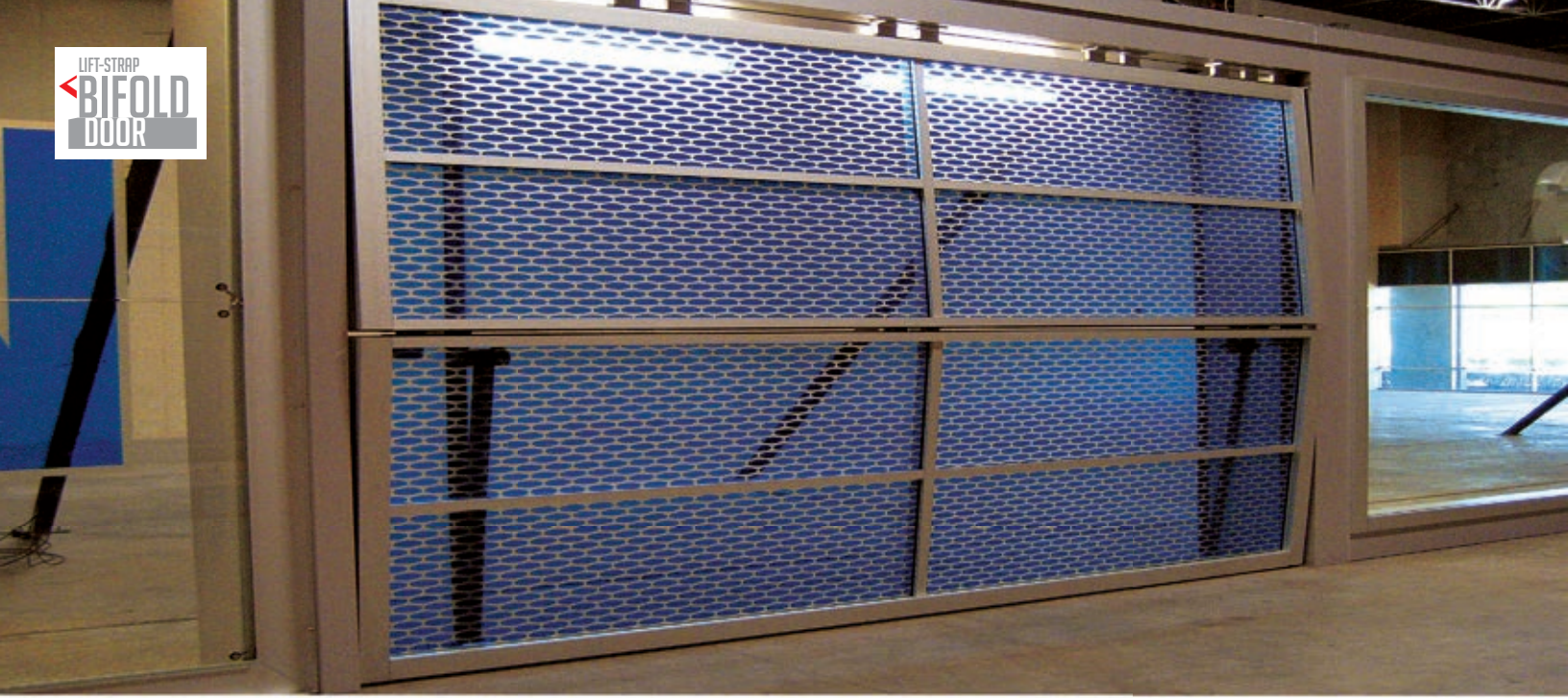
Cubex Limited

Cubex Limited Industrial Bifold Doors, Alberta, Canada

Cubex Limited of Calgary, Alberta, Canada is a busy fabrication business that underwent an extensive renovation project. In order to get the best use out of their building they added eight Schweiss bifold/liftstrap doors for easy access.

Cubex Limited has been providing innovative equipment solutions to municipalities, contractors, and the energy industry across Canada and also been providing consulting services and equipment to the oil industry for over 37 years. Their eight 14 ft. wide 18 ft. tall Schweiss doors were fitted with automatic latching systems, windows and are windrated at 90 mph.

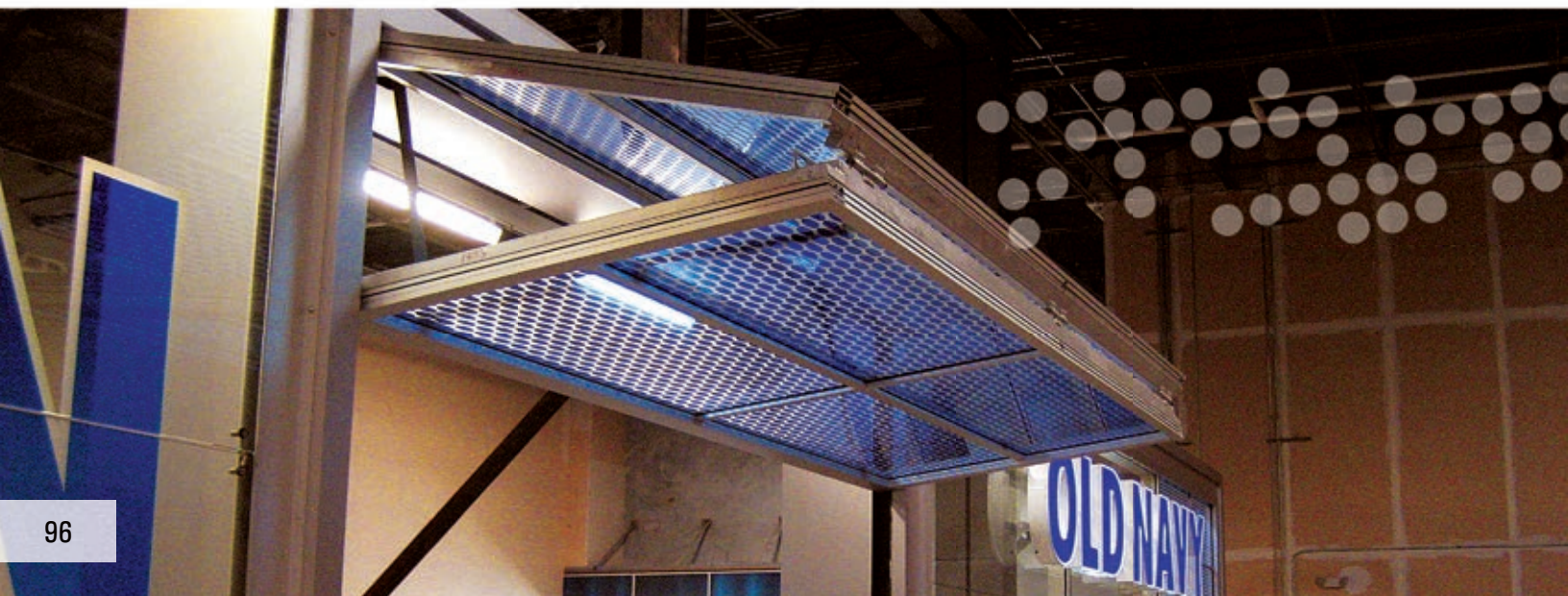




Old Navy Store

Old Navy Mall Entrance, Dallas, TX

Located at the Dallas Galleria, a mall located in Dallas, Texas is a 15' wide by 11' tall custom-designed door made exclusively for Old Navy retail stores. These doors allow Old Navy storefronts in malls to stand out as modern designs rather than the typical mall security doors. The aluminum frame, vinyl mesh and blue-tinted glass adapt with Old Navy's branding identity which helps customers easily identify these stores without reading the store signage alone.





JT Strange Hangar

JT Strange Bifold Hangar Door, Goshen, OH

When JT Strange of Goshen, Ohio built his new airpark hangar he called on Schweiss Doors for a bifold liftstrap door. The hangar has a big 45 ft. x 15 ft. 11" door for his Cessna 182T. Four liftstraps easily lift the bifold door. Interior sheeting gives the door a nice clean look. The cladding on the door is unique in that he wanted it to have a completely different look beyond the typical look of an airport hangar door.

By mounting the sheeting horizontally he was able to have the top corrugated panel of the bifold door overlap the lower panel. When you look closely at it, the two-inch pattern appears to be seamless with no joint in the middle and looks more like a single panel hydraulic door. Another feature that sets it off from other bifold doors is the door is inset about two feet instead of installed on the face of the building. Using the specifications from Schweiss he was able to get wedge height and other information to obtain the highest clearance possible.





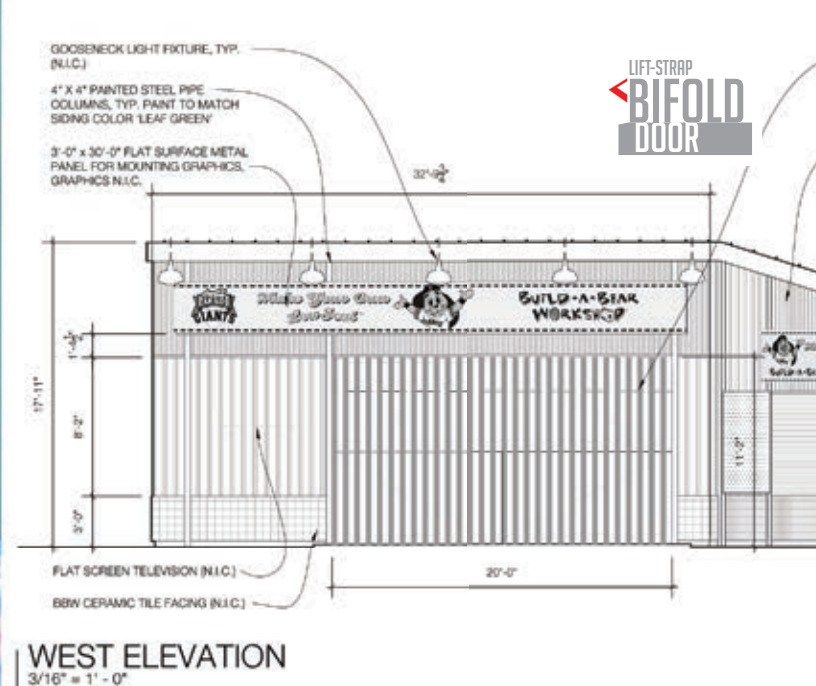
Nine Fine Irishmen

Nine Fine Irishmen Pub, Las Vegas, NV

Nine Fine Irishmen is a Las Vegas southside strip-located pub of epic proportions. It has a great location just across from the MGM Grand Casino. The pub's interior, features a grand Victorian-style bar. It was entirely handcrafted in Ireland by a variety of local tradesmen using authentic Irish materials.

A unique kiosk with a spectacular 360 degree view of the Las Vegas Strip opens up outside to the public with four Schweiss hydraulic designer doors. The year-round outdoor patio and bar kiosk, has ample seating for about 100 people. It features two custom made Schweiss hydraulic designer doors 15 ft. 1.5" x 4 ft. 4" which open at the sides and two 7 ft. 11.5" hydraulic doors opening at each end. A unique feature for this is the use of only one hydraulic pump for all four doors, with four separate key stations to open and close the doors. When the doors are open they provide shade to the area around the bar. When closed, they provide a tight seal and security to the contents inside.

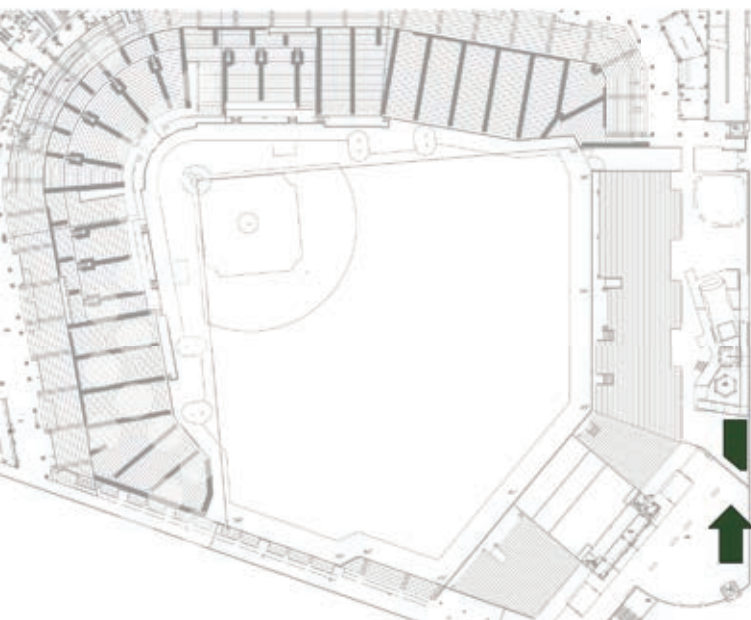




SF Giants Stadium

AT&T Stadium, San Francisco, CA

It's an unglamorous feature, but the 20'-wide by 9'-high bi-fold door at AT&T Stadium in San Francisco, CA, provides a vital function by securing a critical storage area within the ballpark's fan recreation area. The 20'-wide by 9'-high door was manufactured by Schweiss Doors of Fairfax, MN, and installed by Soule Building Systems of Cotati, CA. AT&T Stadium is the home of the San Francisco Giants.





Kenyon College

Kenyon College, Gambier, OH

Among the glass walls that comprise the perimeter of Kenyon College's \$80 million Center For Fitness, Recreation and Athletics is a 25'-wide by 14'-tall glass bifold door, manufactured by Schweiss Doors of Fairfax, MN, and installed by ASI Limited of Indianapolis, IN.

The 130,000 sq. ft. building is located on the school's campus in Gambier, OH.





Stanford University

Global Ecology Center - Stanford University, CA

Founded on the campus of Stanford University in 2002, the Carnegie Institution's Global Ecology Center was created to study the interaction between the earth's various ecosystems.

Given the department's nature-intensive mission, the presence of three bifold doors at the Center's perimeter seems appropriate. In the closed position, these 9'-tall glass doors—two of which are 14' wide while the other is slightly larger—bring natural light into nearby interior work spaces. And when opened, they literally connect the indoors and out, thus bringing researchers a little closer to the work they've dedicated themselves to. The doors were manufactured by Schweiss Doors of Fairfax, MN, and installed by Rudolph & Sletten Contractors of Foster City, CA.





Cycle City

Cycle City, Honolulu, HI

Nine designer-style glass bifold doors from Schweiss Doors of Fairfax, MN, are featured around the perimeter of the Harley-Davidson Cycle Project showroom in Oahu, HI.

The doors range in size from 18' to 45' wide and when closed, function much the same as ordinary window walls. The advantage of having doors instead of windows is that any or all of them can be opened, which facilitates the movement of inventory in and out of the showroom, and allows natural ventilation to play a much bigger role in interior comfort. Arita/Poulson General Contracting of Puunene, Maui, HI, installed the doors.





Basement Door

Lake Home Basement Door, MN

Gene and Carol Buboltz are the owners of this residential 4' x 6-1/2" x 6' 7" custom "One-Piece®" Hydraulic Door which is located on the back side of their lake home. This custom, classy wall-door is unnoticeable when closed while the outside door trim matches a seamless finish to the house's exterior. This makes a nice hidden entrance to their basement for whatever possibilities they wish to use it for. When garage space is limited; such an opening to a basement makes it possible for storing lawnmowers, ATV's, jet-skis, and plenty of other common equipment. One of the greatest qualities of the door is the remote controlled handicap accessibility.





TGI Fridays

TGI Fridays Restaurant

This custom set of Schweiss bifold doors was the perfect solution to provide a unique dining experience for this restaurant's patio bar customers. Restaurants from coast-to-coast are dressing up their interiors and exteriors, and in many cases utilizing Schweiss Bifold and Hydraulic one-piece Designer Doors to open up new areas to increase their seating capacity.





Custom Matched Siding

Most people who order Schweiss Bifold or Hydraulic doors try to match the door sheeting and color with the building or hangar sheeting, but there are many other cladding substitutes used. Decorative door covering can be done in stucco, cedar, total glass, translucent panels, decorative wood, vinyl siding, rock face or using decorative windows to mention a few.



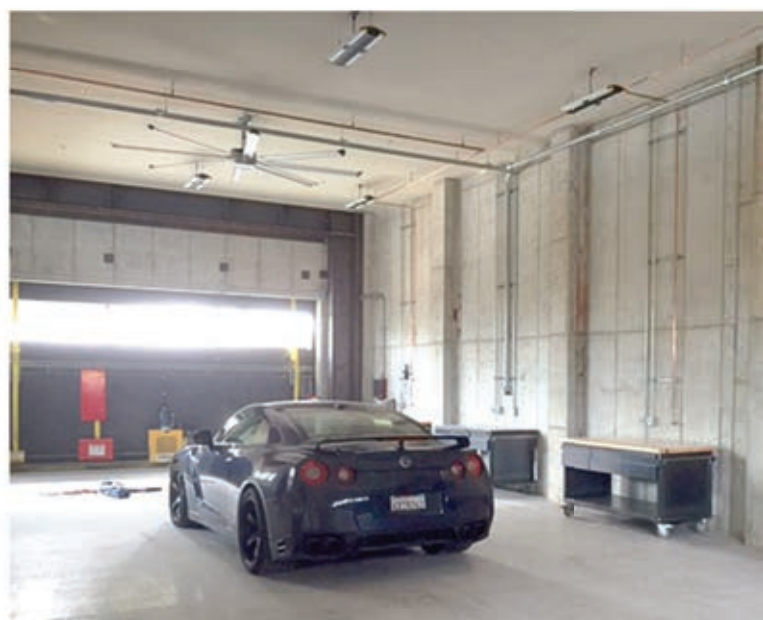


Truckee Garage Door

Custom Garage Door, Truckee, CA

What makes this garage stand out is what's in it and it's size. The 2,000 sq. ft. garage with a 17' ceiling is attached to a 2,000 sq. ft. one-bedroom custom guesthouse. Two bifold/liftstrap doors are located at opposite ends of the garage. They are 18' wide by 10' with automatic latches, photo-eye sensors and a door base safety edge. They chose a bifold door over a hydraulic door because Truckee gets about four feet of snow in the winter.

"We were concerned about the straps so we ran the door up and down a thousand times, it works great and the locking system (automatic latches) tightens it up real nice."



THANKS FOR TRUSTING
SCHWEISS
WITH YOUR IDEAS...

WE'LL HELP YOU MAKE THEM HAPPEN!



CONCEPT

TO

REALITY



For over 40 years Schweiss Doors has manufactured the highest quality hydraulic and bifold doors for all building applications. Schweiss Doors has earned "brand name" recognition in the aeronautical industry, agricultural, commercial, and industrial sectors worldwide. Schweiss Designer Door series is sought after by architects, engineers and homeowners as the only choice. Schweiss Doors supplies door weights, engineering data, wind load and design specifications for your Schweiss "One-Piece" Hydraulic Doors or Lift-Strap Bifold Doors to make sure they will fit your building perfectly and ensure smooth, safe installation with no loss of headroom. Schweiss doors are sold worldwide, No opening is too big or too small for custom-made Schweiss Doors.

